



Regan Tschida

Portfolio

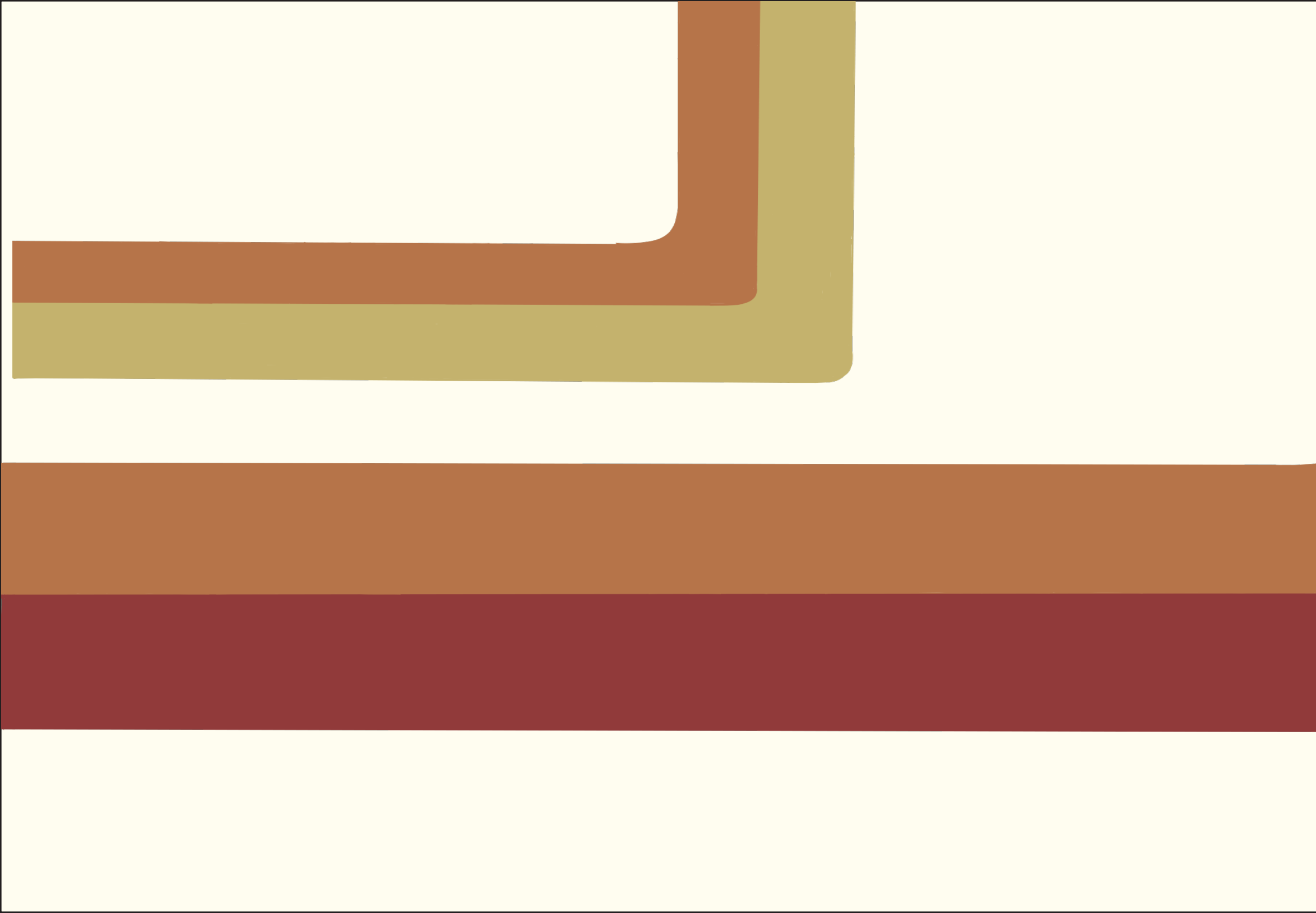




Table of Contents

4.....

Office Space

8.....

Loft Space

10.....

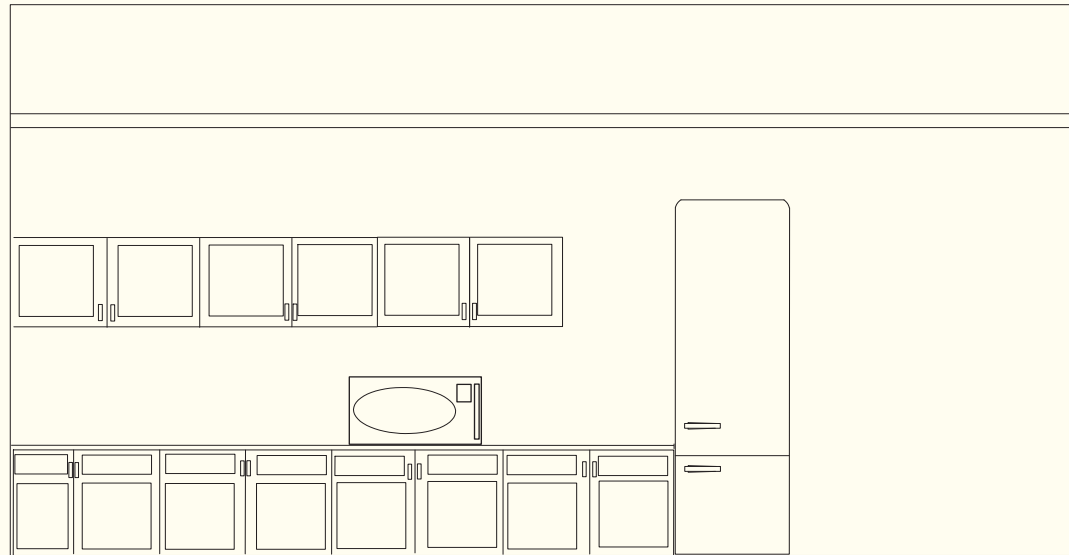
Accessible Bathroom

14.....

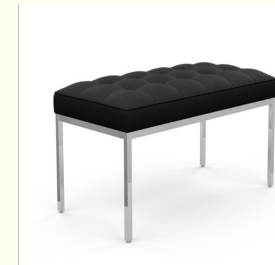
Off-Kilter

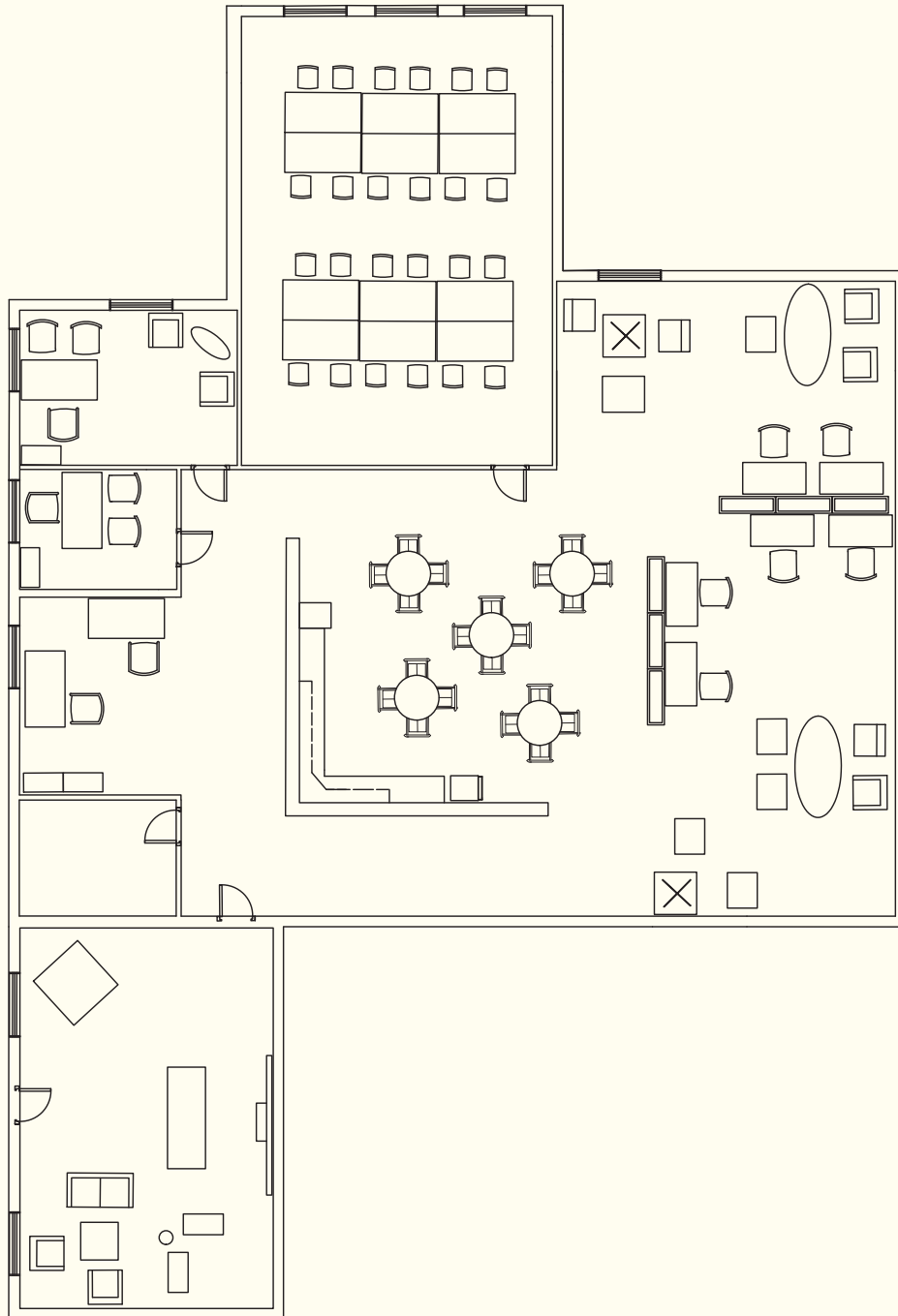
18.....

Shoes 4 the Shoeless



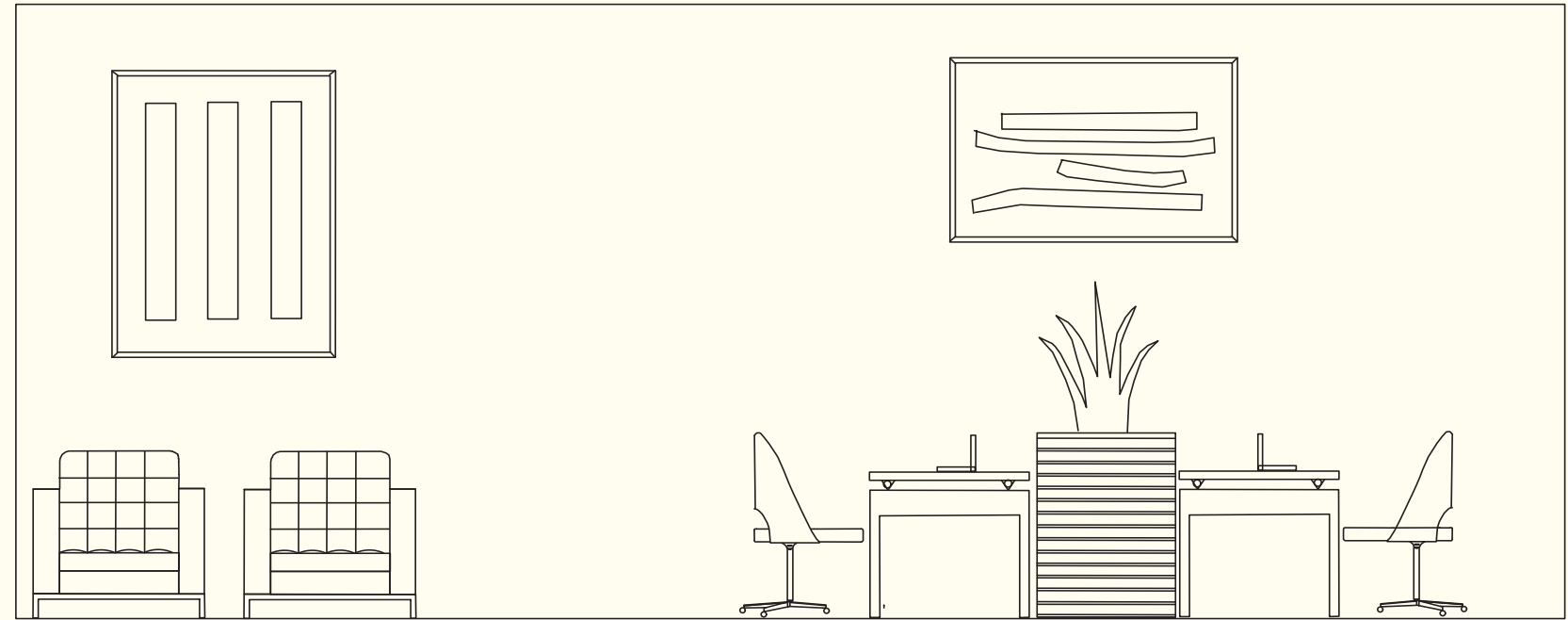
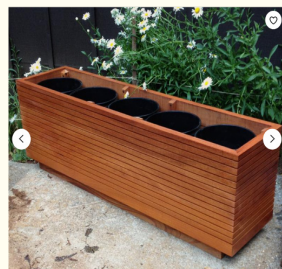
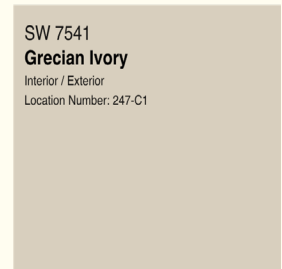
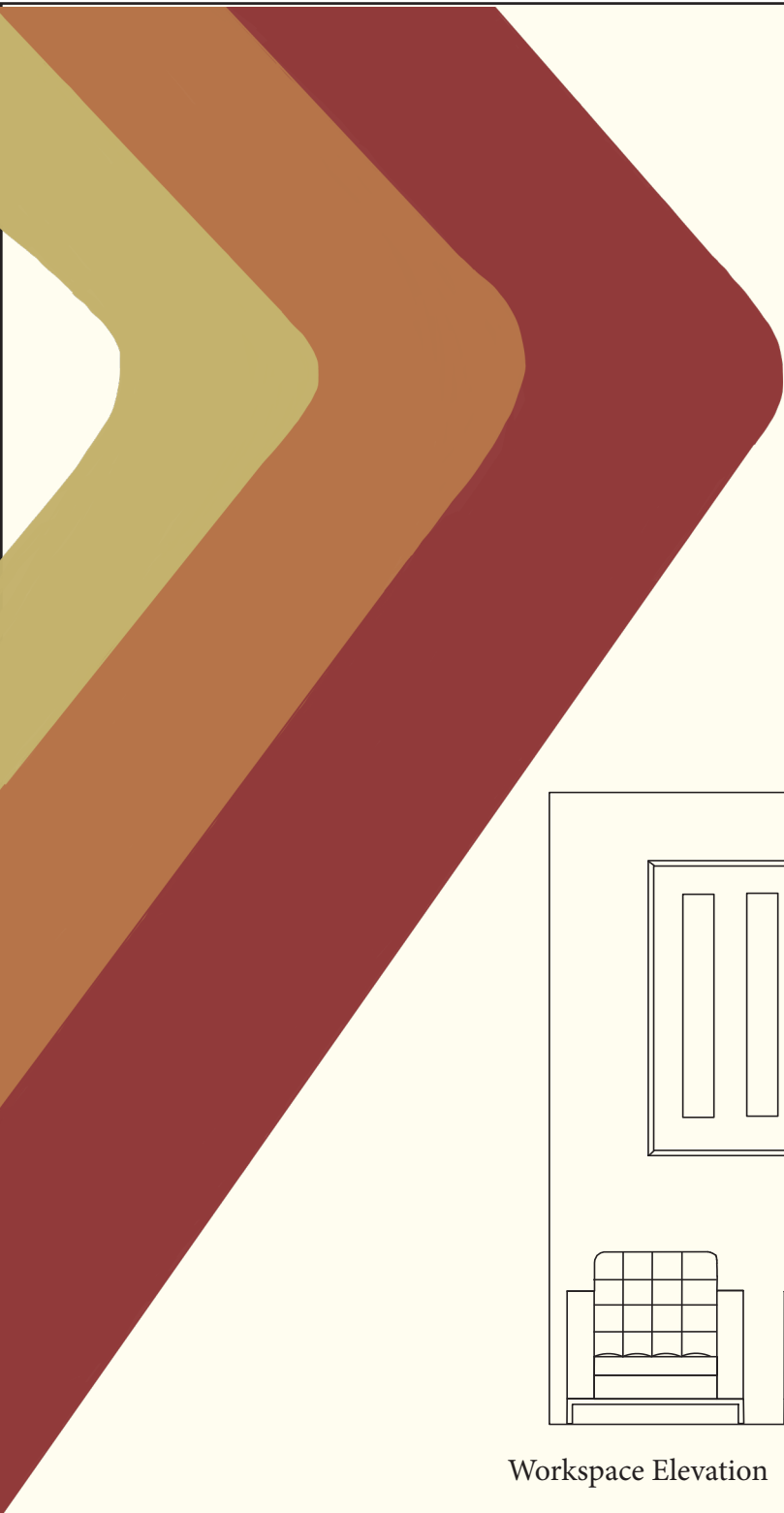
Kitchen Elevation



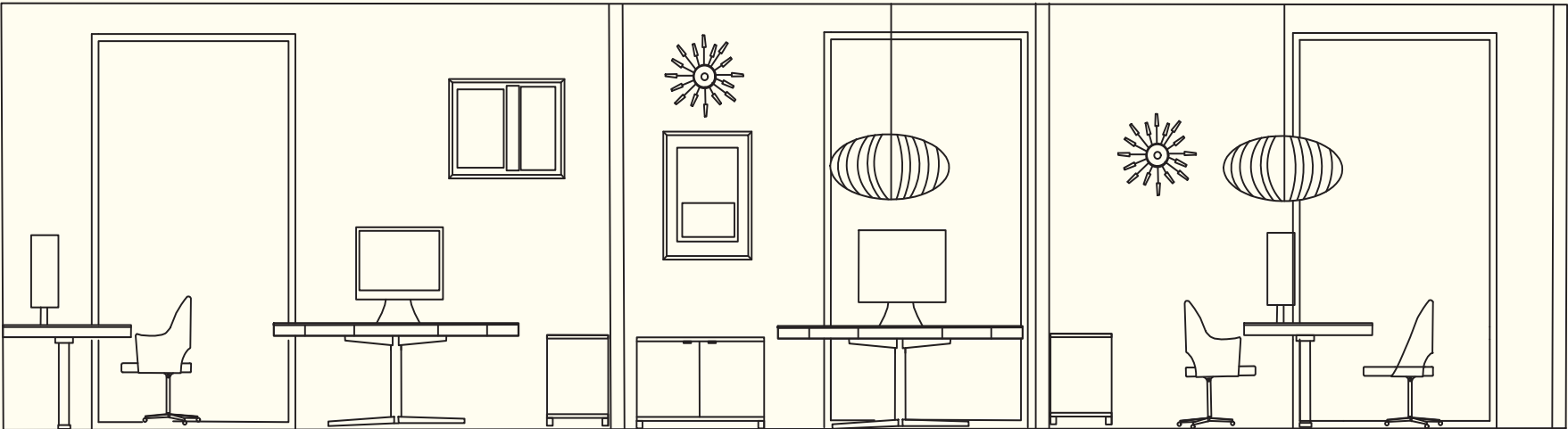


Office Space

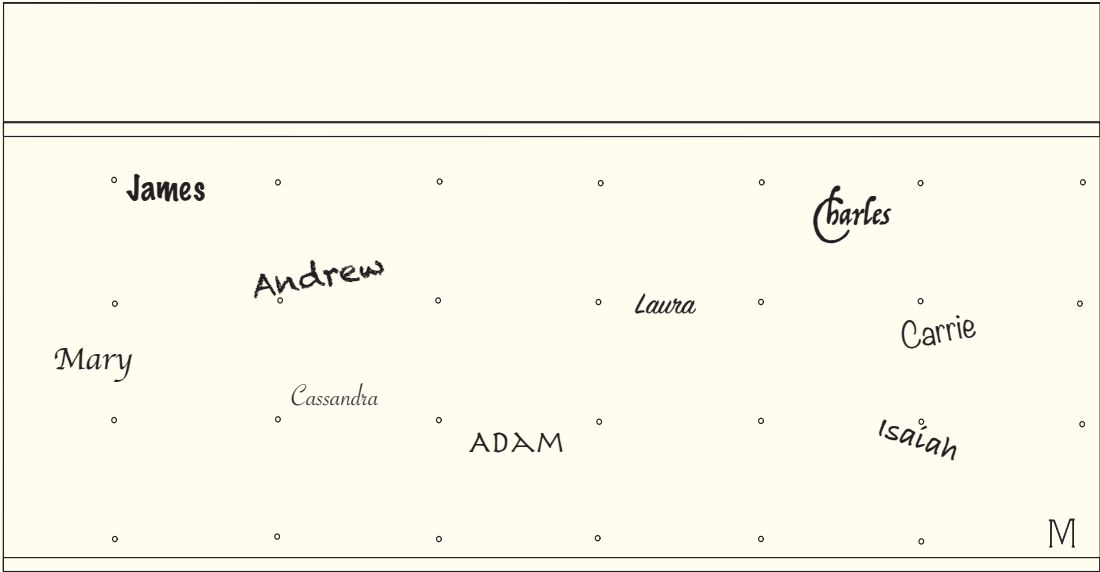
The premise of this project was to design a flex office and training space for a company of our choosing, and to draw inspiration for the space from a well-known designer. For this project, I chose to design an office space for the Moleskine notebook company, drawing inspiration from the work of Florence Knoll.



Workspace Elevation



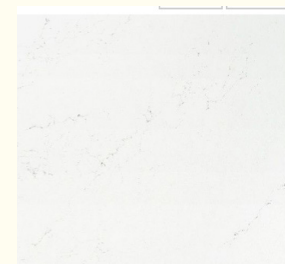
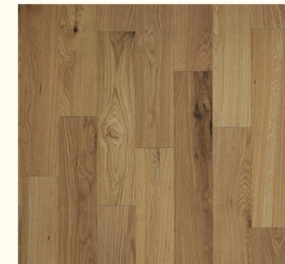
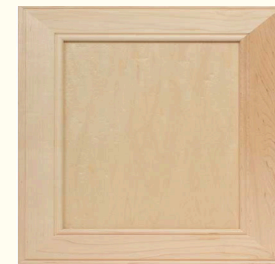
Workspace Elevation

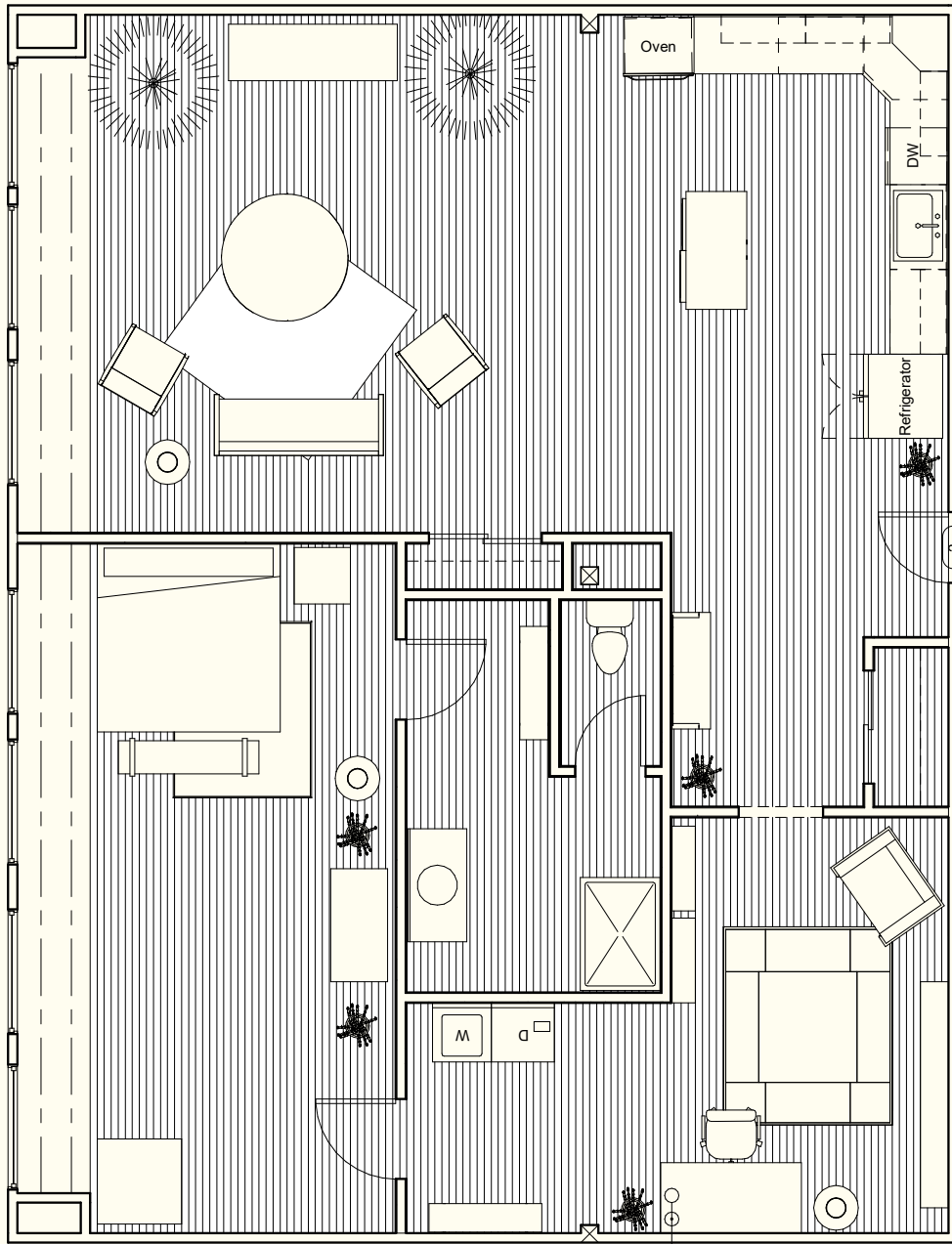


Moleskine Grid Wall Elevation



Kitchen Perspective

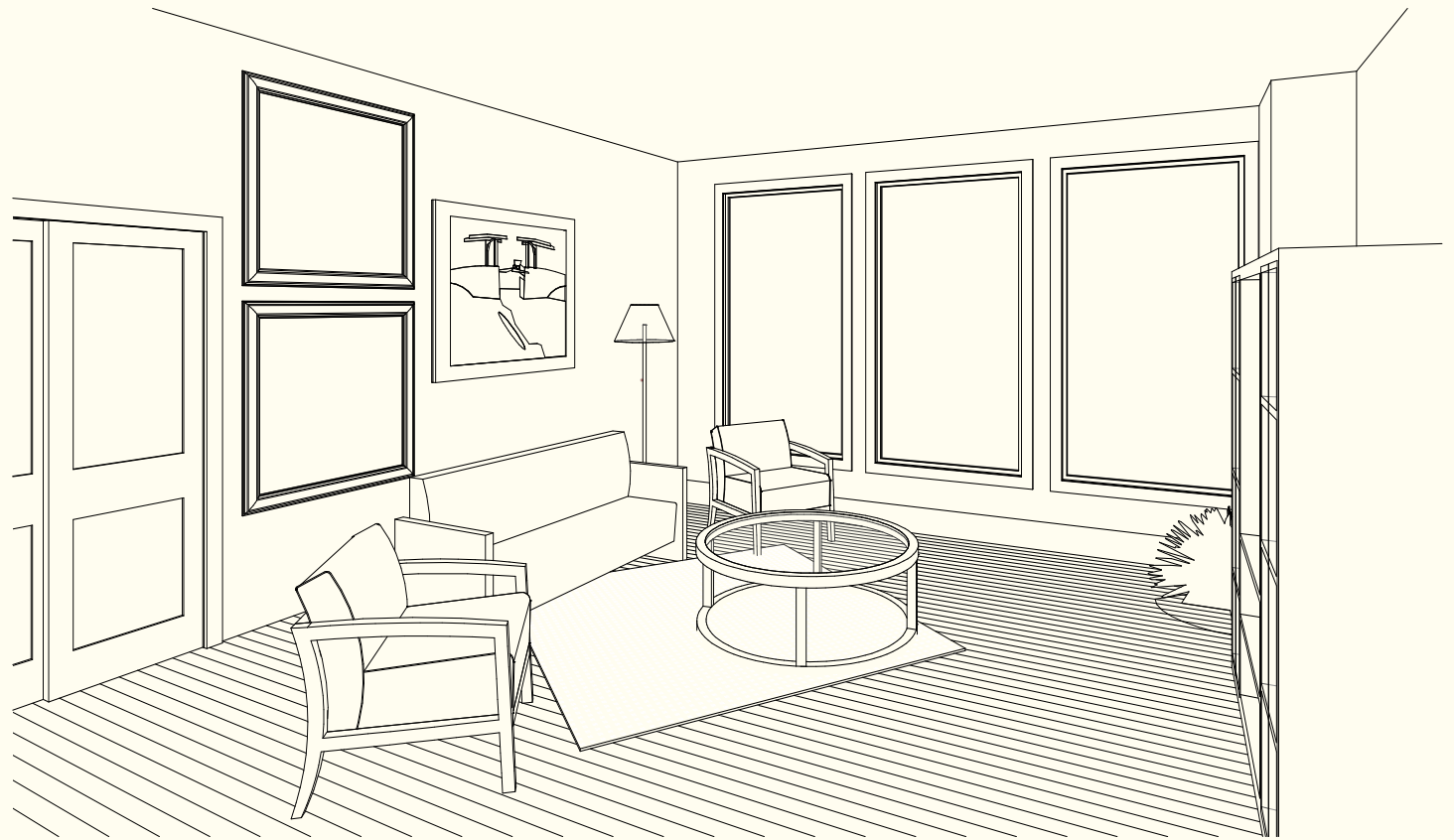




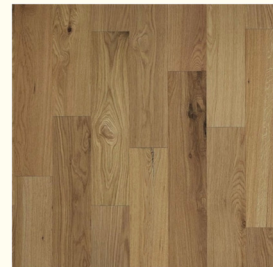
Residential Loft

This residential Chicago loft space was created following an interview with a mock-client, assessing their needs and desires for a space, taking those parameters to create the client's ideal loft space.

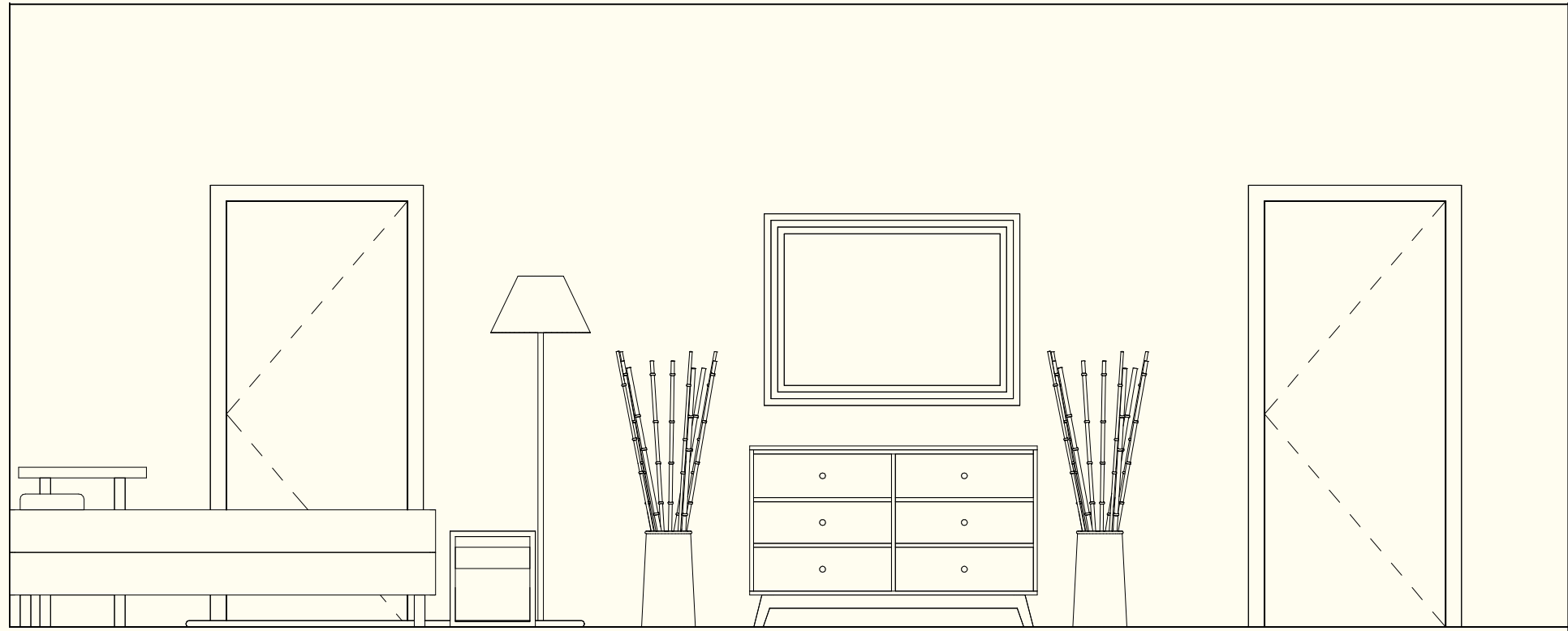
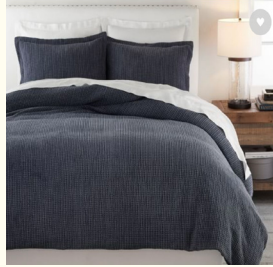
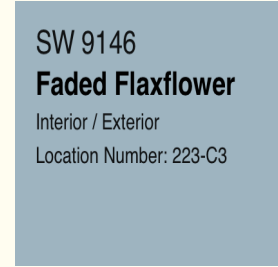
The client was partial to more neutral tones and finishes, as well as a large desire to utilize as much natural light as possible



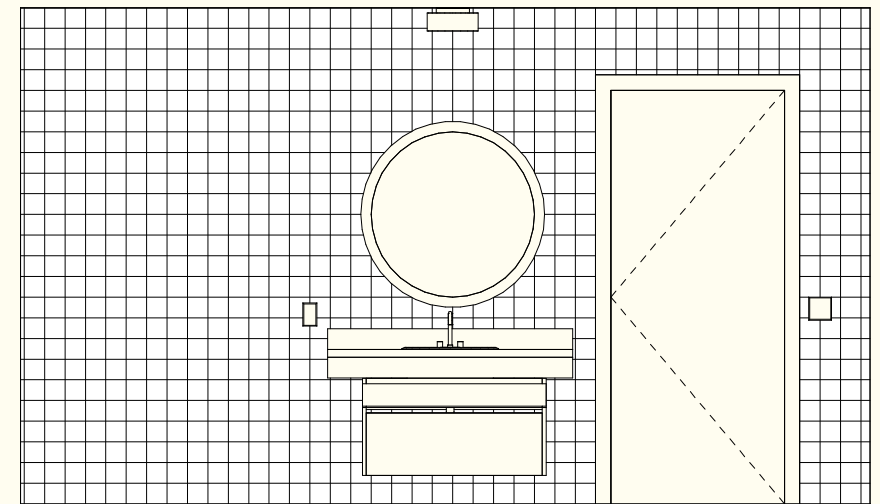
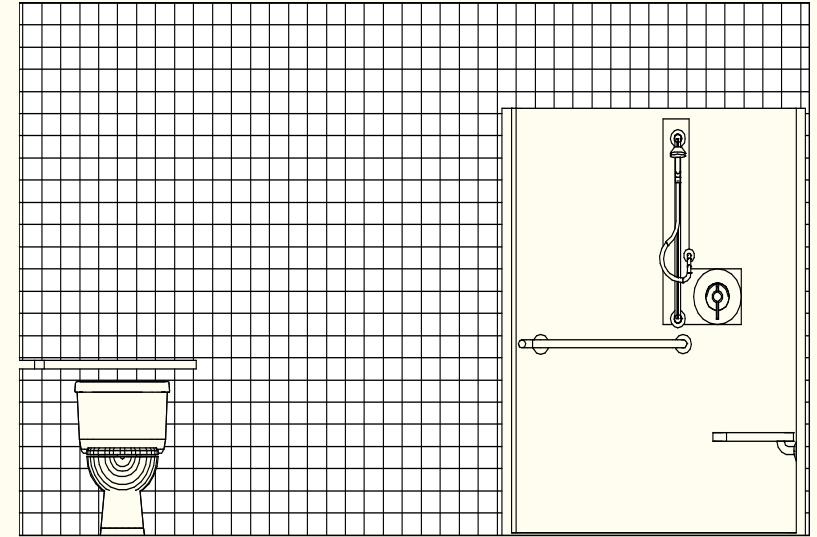
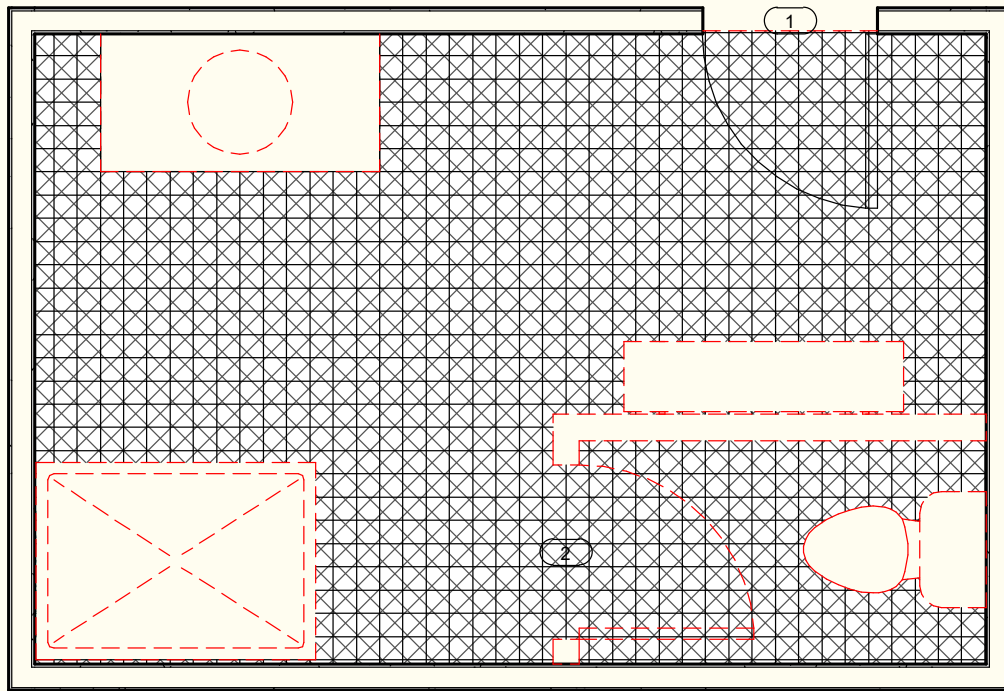
Living Room Perspective



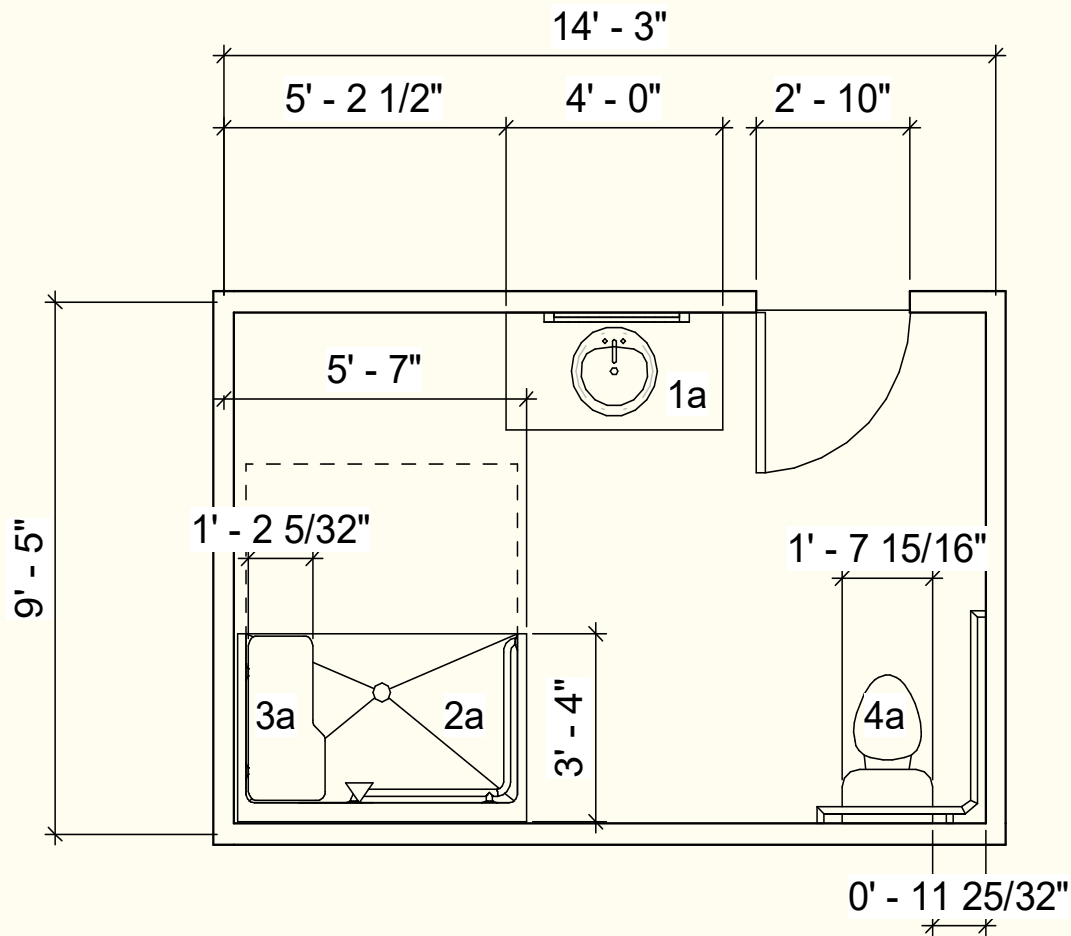
SW 9166
Drift of Mist
 Interior / Exterior
 Location Number: 238-C2



Bedroom Elevation



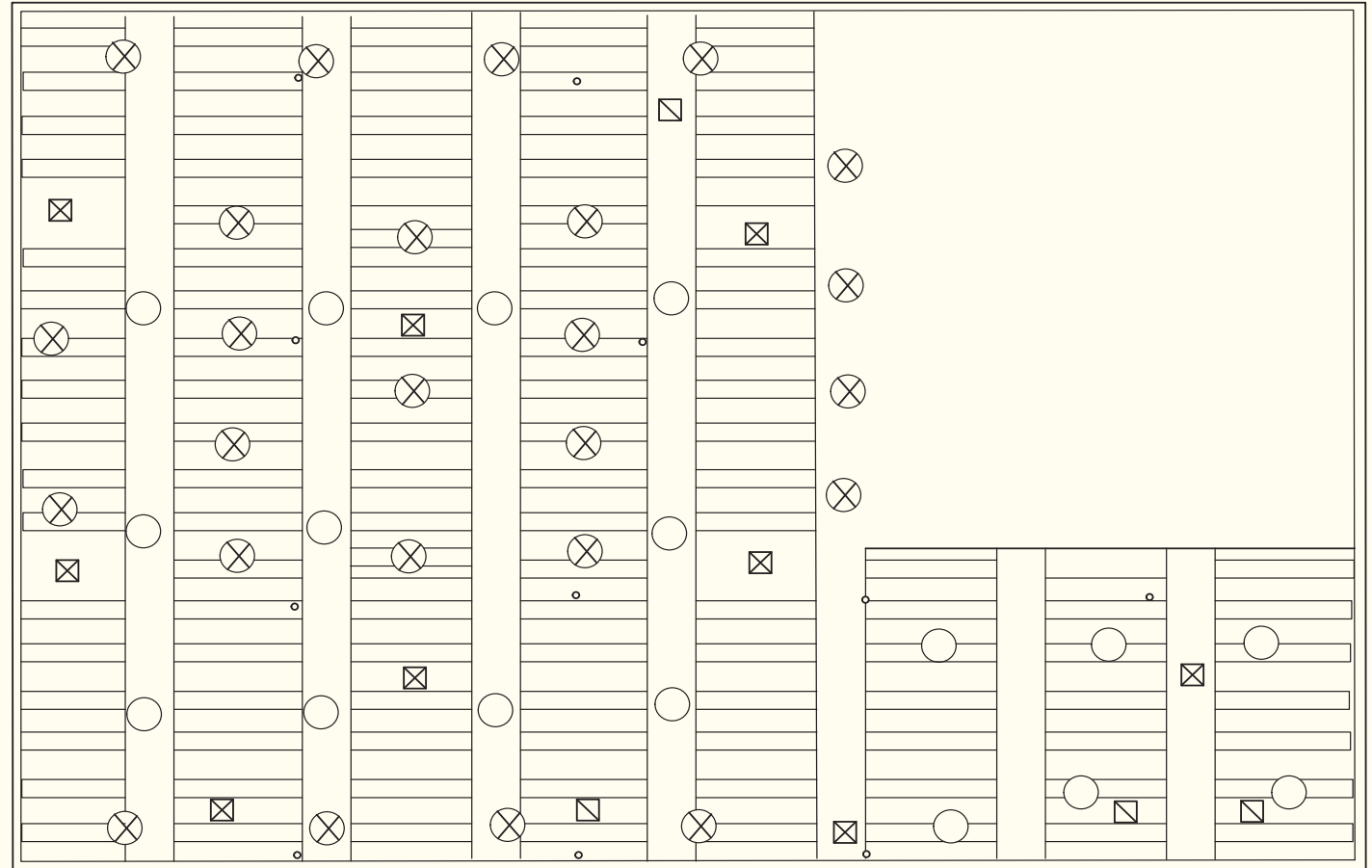
Accessible Bathroom

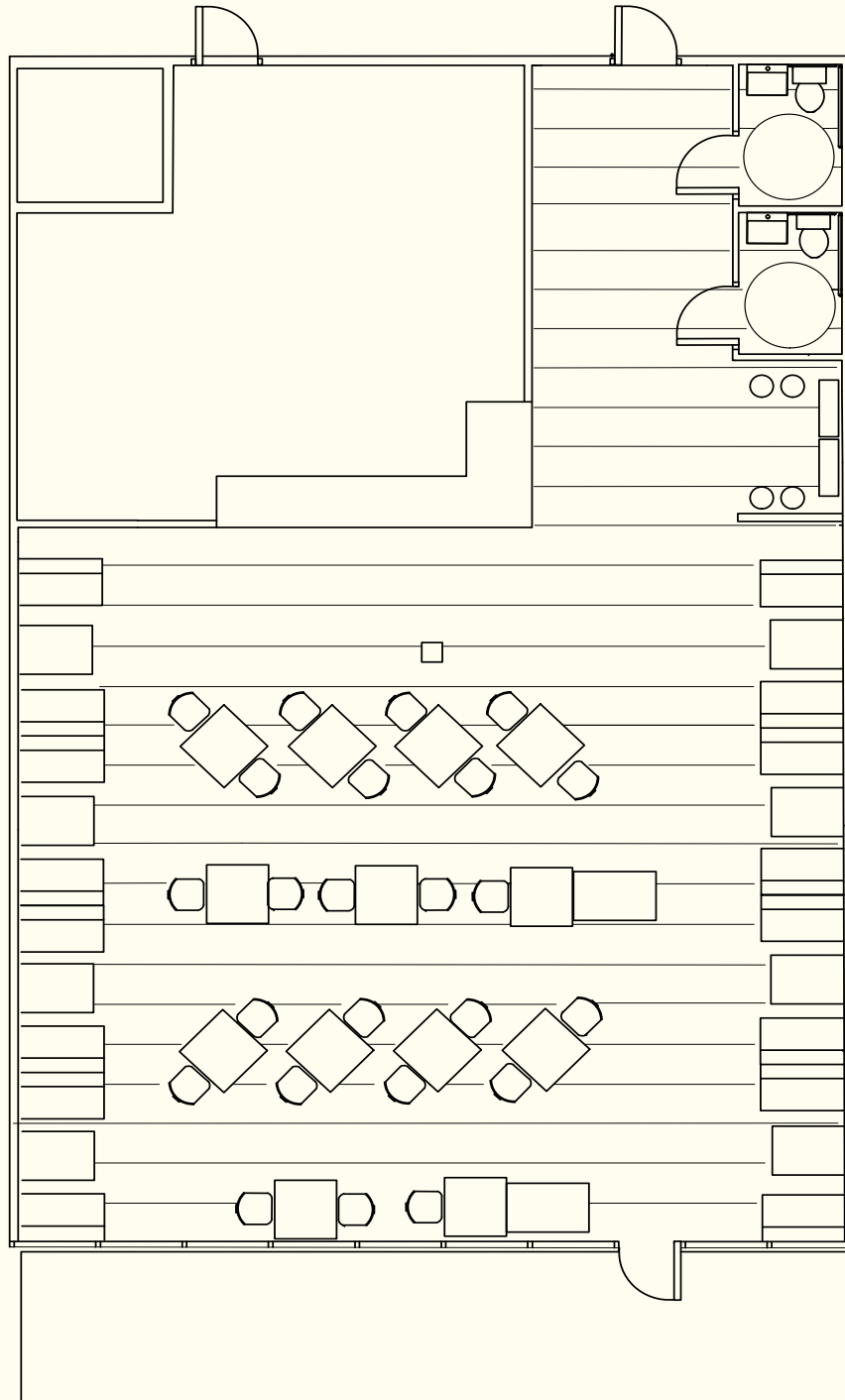


This project was designed to take the bathroom created for the loft client, and make it into an accessible bathroom.

Key

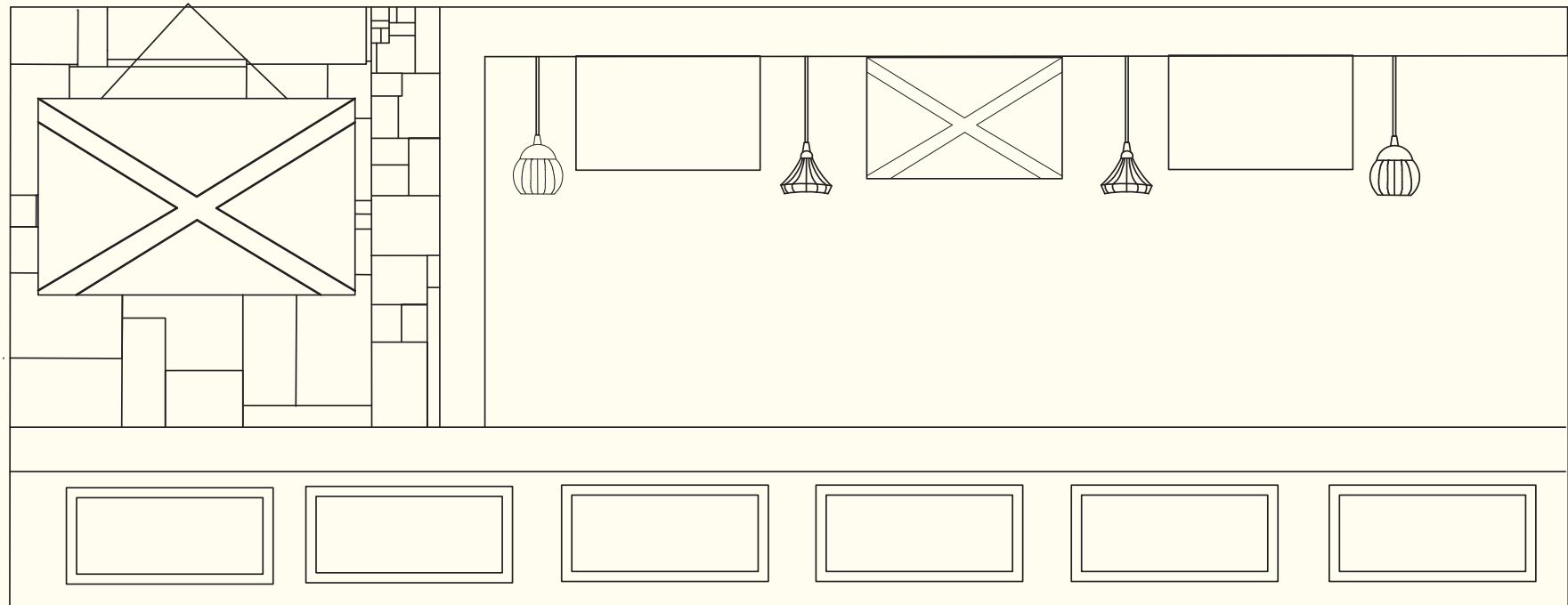
- ☒ Supply
- ⊗ Pendant Light
- ☐ Return
- Recessed Light
- Sprinkler



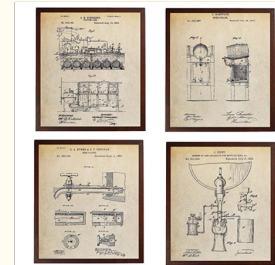
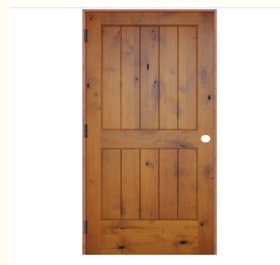
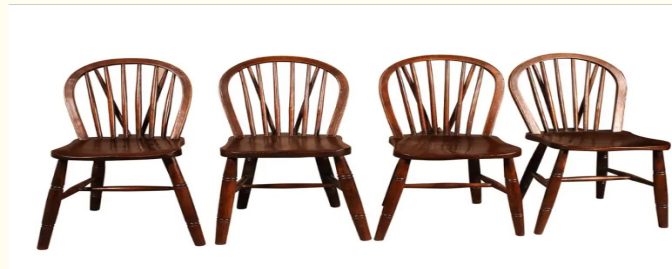


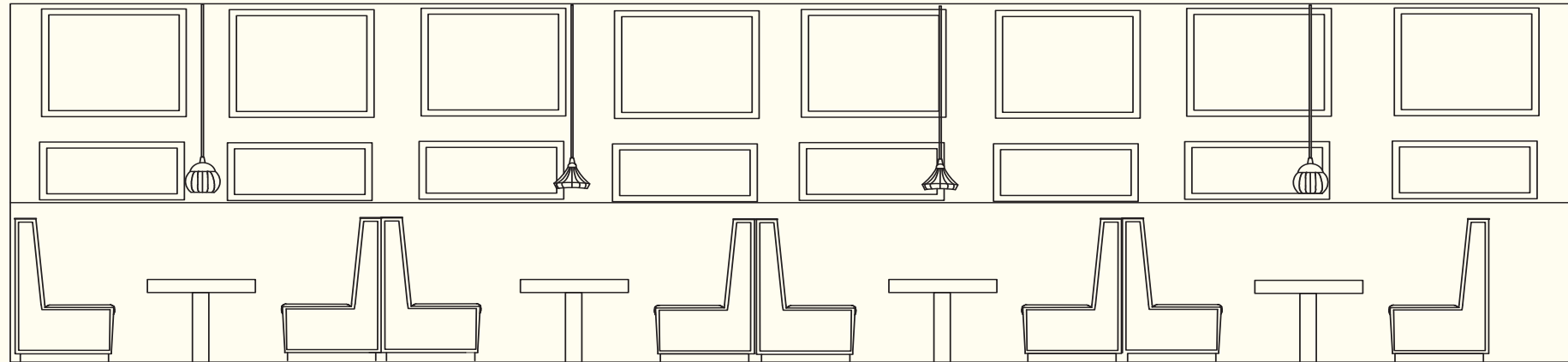
“Off-Kilter”

This project’s premise was to design a restaurant based off the culture of a country of our choosing. This restaurant is inspired by Scotland, specifically traditional Scottish pubs.

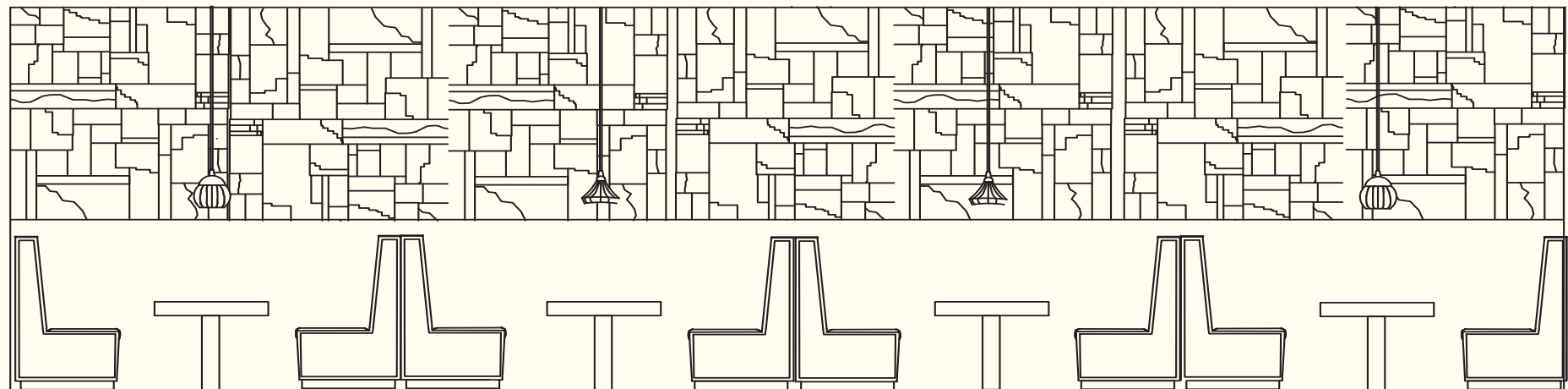
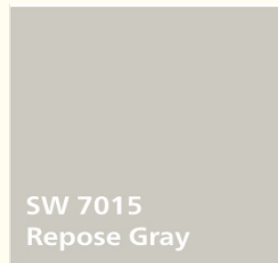


Order Counter Elevation

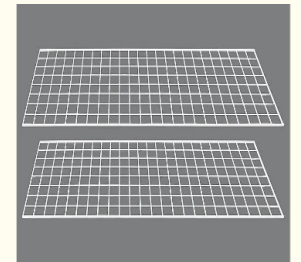
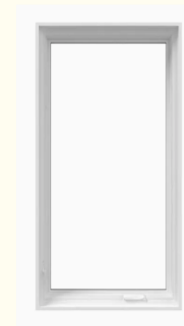
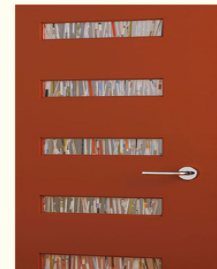
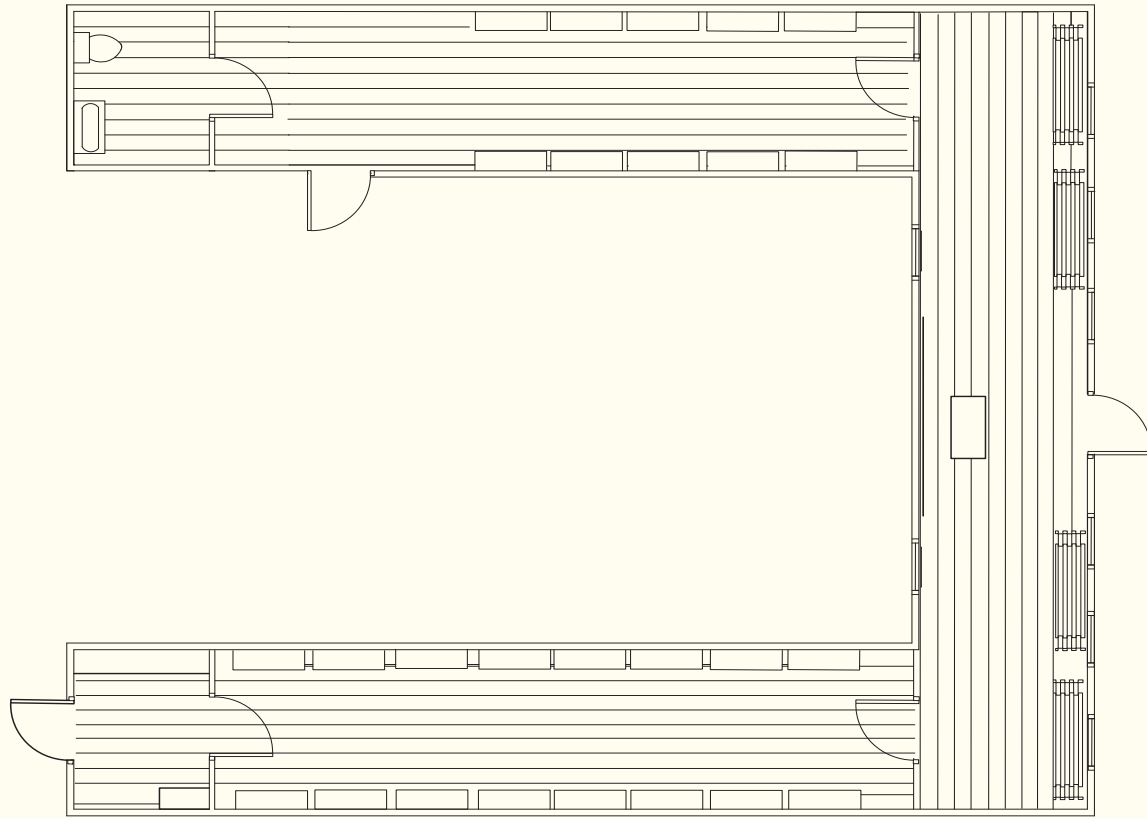


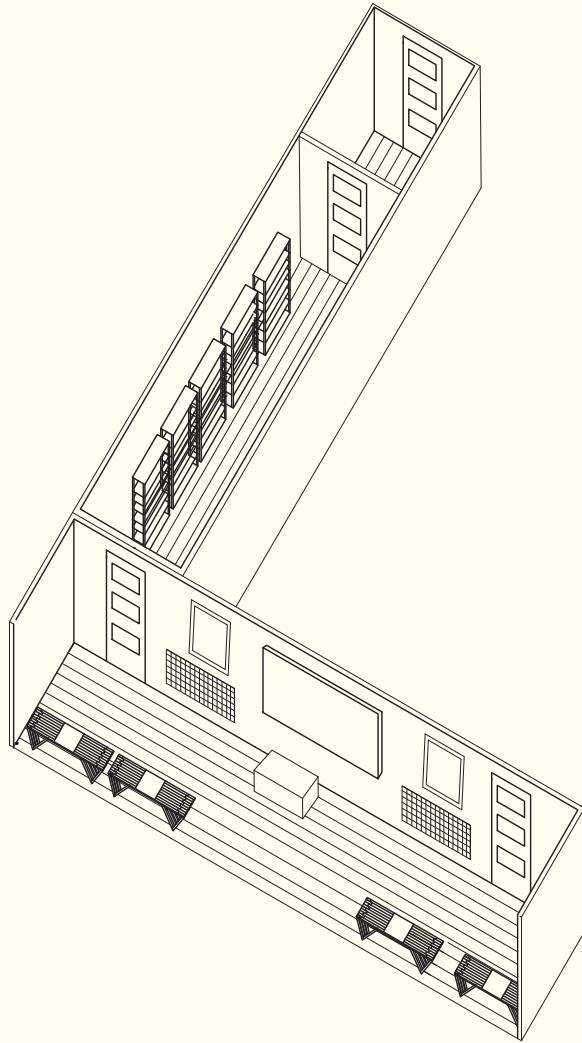


Booth Elevation



Booth Elevation





Shoes 4 the Shoeless

“Shoes 4 the Shoeless, Inc. is a local non-profit that provides new, correctly fitting gym shoes and socks to Dayton area children in desperate need. Through a uniquely efficient and effective system, we help children eliminate one of poverty’s most visible stigmas.”

“In Montgomery County about 40% of children live in poverty. The majority of them are in desperate need of shoes and socks. Wearing ill-fitting and worn shoes often condemns children to physical, social and emotional problems that last a lifetime. Shoes 4 the Shoeless began in 2010 and has helped thousands of children in our community.”

This project’s idea was to create a sustainable facility for a charity or non-profit using shipping containers.