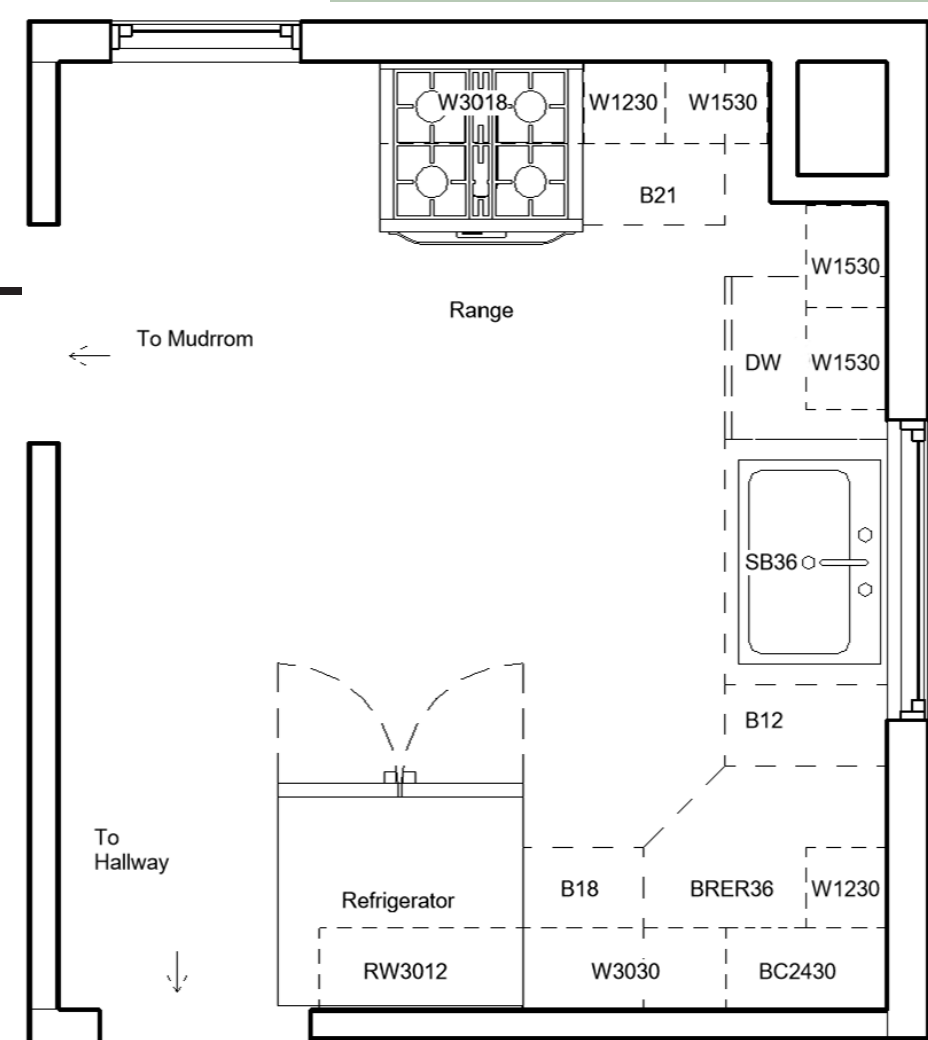




Farmhouse Kitchen Remodel

Oddly placed windows, a dysfunctional layout, worn out surfaces, and a lack of storage were the primary motivation behind this kitchen remodel for the homeowners of this 1927 farmhouse style home. Along with addressing these needs a calm color palette, granite countertops, easily cleaned surfaces, and a brighter, more open feeling for the space were also needs requested by the homeowners. The homeowner also had a sentimental want request for the space. She hoped the design could incorporate display space for her treasured crystal collection that she had inherited from her grandmother. Lots of wants and needs in just under 120 sq ft. To create the design of the space, and to have it feel like it was always part of the home, inspiration was drawn from the homes style. A new farmhouse style kitchen was in order, but with some modern twists. A new layout was chosen that included switching the sink and stove walls. Removing of both existing widows and placing a new window above the sink overlooking the backyard allowed for a better layout and more cabinet space. Mixing the stainless-steel appliances with copper and bronze accents was inspired by a farmhouse copper sink the homeowner had received as a gift from her children for her new kitchen. A copper and bronze vent hood was chosen to coordinate with the copper sink and to serve as a focal point on the stove wall. Wood toned cabinets were chosen to ground the kitchen and to coordinate with the copper and bronze accents in the space. Light gray upper cabinets lend to the brighter, more open feeling of the kitchen. Thirty-inch upper cabinets were topped with fourteen-inch glass front cabinets to display the homeowner's crystal, while adding to the sense of openness. These were lit using tape lighting to show the sparkle of the crystal and to prevent them from looking like black holes at night. The tape lighting was also used as under cabinet lighting to light the work surfaces. Brown pearl granite with a leathered finish top the base cabinets pulling in all the tones of the cabinets and metals in the kitchen, as well as being easy to clean since it does not show fingerprints. The backsplash tile has a feeling of an old patchwork quilt that lends itself to the farmhouse look of the kitchen. LVT flooring in a stone look was chosen for its color, durability, and ease of cleaning, as well as, to keep the space feeling light and bright. To give a little color to the kitchen while remaining calm and neutral, a soft pale green paint was chosen for the walls. The result is a more functional and beautiful space that should provide many more years of happy use for the homeowners.

Before...

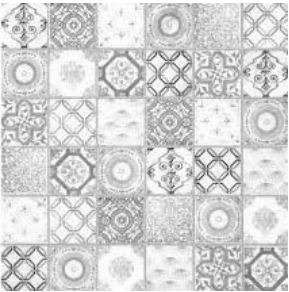
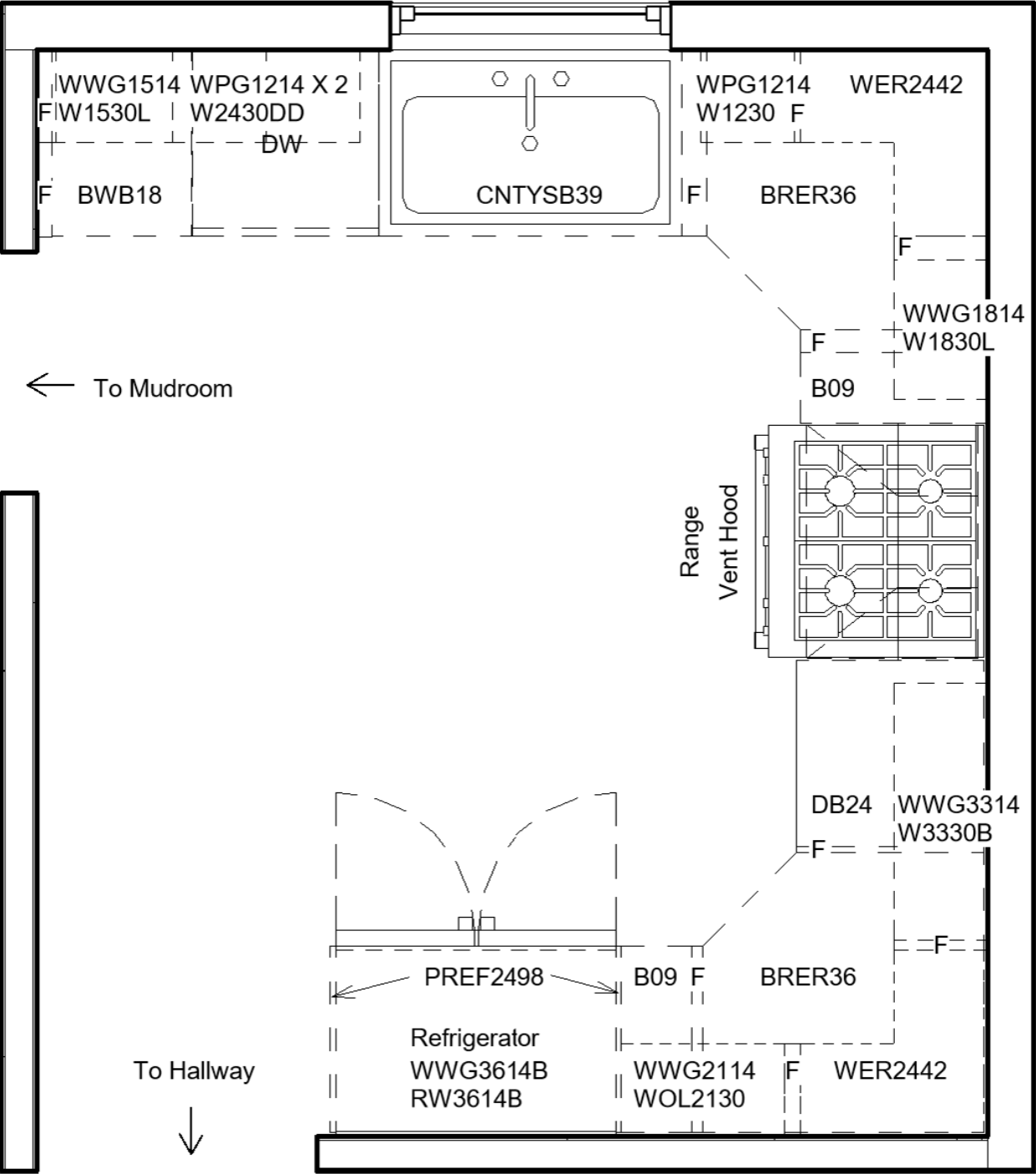


Before Floor Plan
Scale 1/2" = 1' - 0"





After...



Backsplash

LVT Flooring

Brown Pearl Granite - Leathered

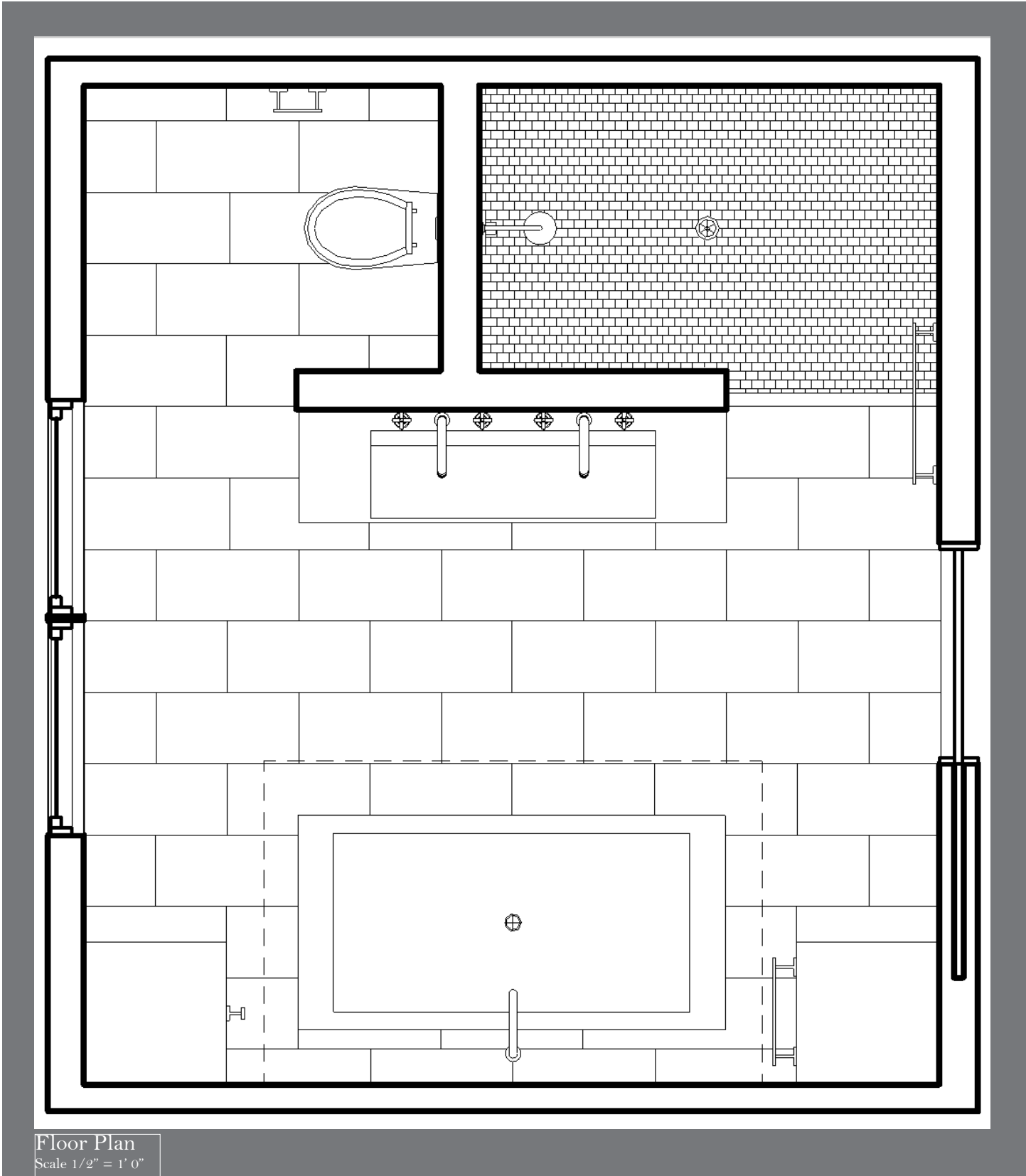
Base Cabinets

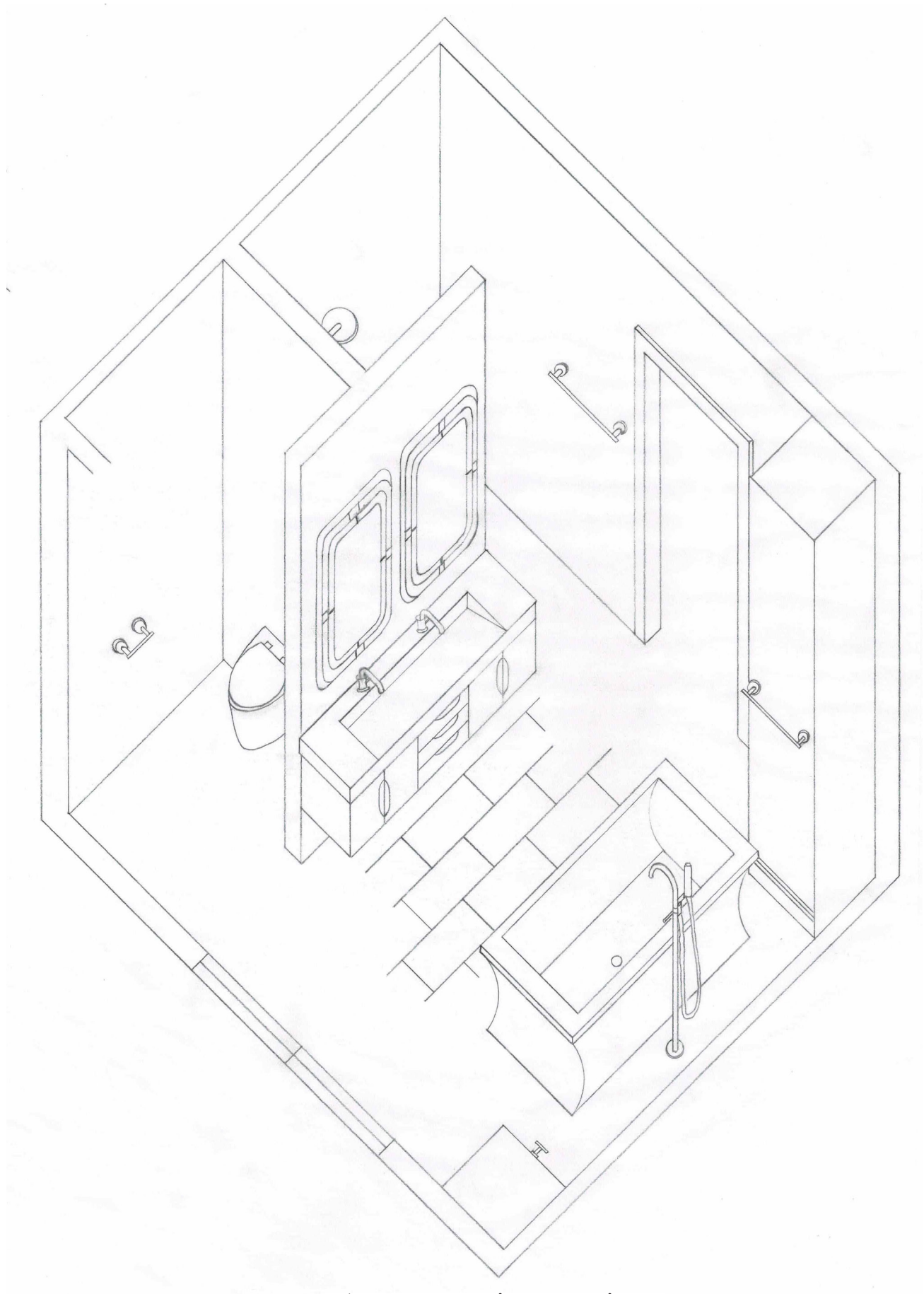
Upper Cabinets

After Floor Plan
Scale 1/2" = 1' - 0"

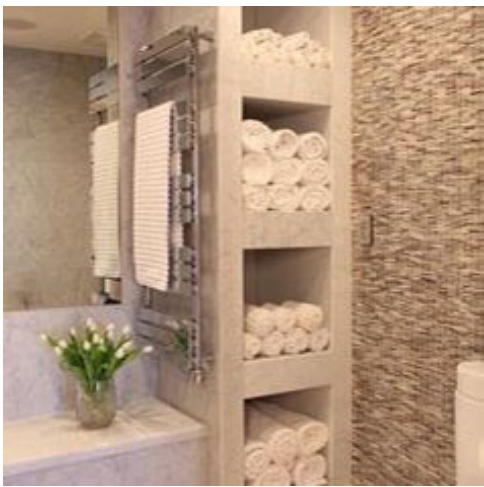
Contemporary Master Bath

For this project in my kitchen and bath design class, we were to design a custom bath to meet the wants and needs of a client of our choosing. We were to create a design program with questions to determine these wants and needs and design a plan from there. My clients were an empty nester couple who wanted to build their dream home. They had lots of ideas and photos but did not know how to put them all together. They wanted the bathroom to have separate spaces for each bathroom function, have plenty of storage, and to have a sleek modern design. The wife also wanted a soaking tub with a chandelier over it. She had seen it in a magazine and had to have it. She also had a piece of white and gray Carrera marble tile with gold veining that she knew she wanted to use in the bathroom. This piece of marble became the inspiration for the design. The marble was used for the floors and walls of most of the bathroom. A smaller scale marble tile was chosen for the shower for slip resistance and to coordinate with the larger tile. Gold toned plumbing fixtures, towel rods, etc. were chosen to contrast with all the white in the space and to draw the eye to the gold veining in the tile. A floating vanity in a wood tone with a trough sink was placed on the wall outside the shower and water closet spaces. A wave tile by Dune was used to add visual interest and texture to the wall. Lighted gold tone mirrors were used to help the couple be able to see when doing their bathroom routines. The gold tone of the mirror served to compliment the other gold tones in the space. On the wall opposite the vanity, flanked by two tall custom storage cabinets, was a large soaking tub. On the wall behind the tub was more Dune wave tile. Above the tub, a tray ceiling had to be added to the design to meet code for the wife to have her chandelier. Floating in the space was the amazing chandelier by Hubbardton Forge, looking more like a modern art sculpture than a light fixture. Small recessed lighting was used throughout the rest of the bathroom to add light but not detract from the other pieces in the space. The final design was sleek and modern. The glamorous finishes gave the bath the luxurious feel the clients wanted from their dream bathroom.



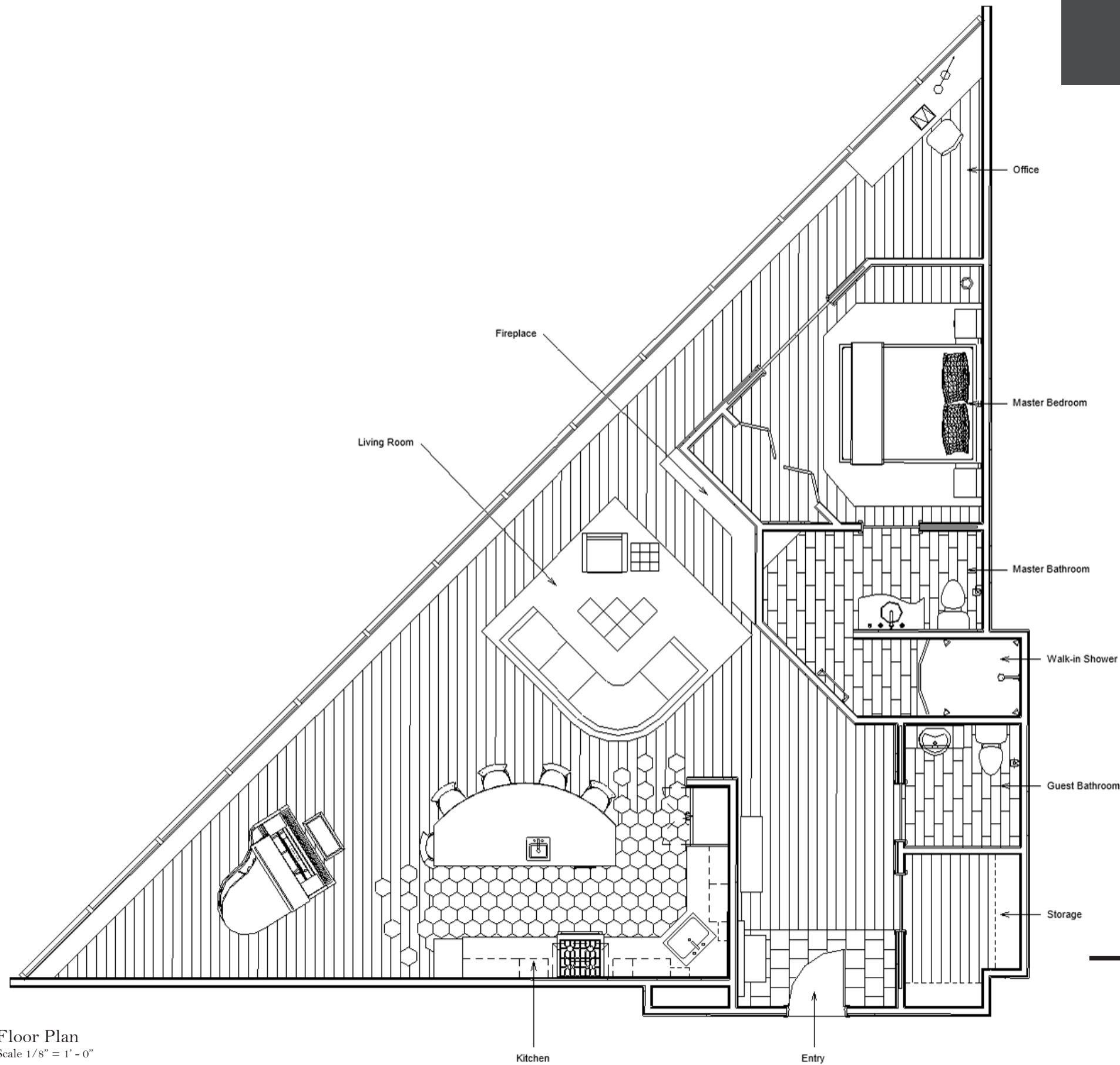


Axonometric Drawing
Scale 1/2" = 1'-0"



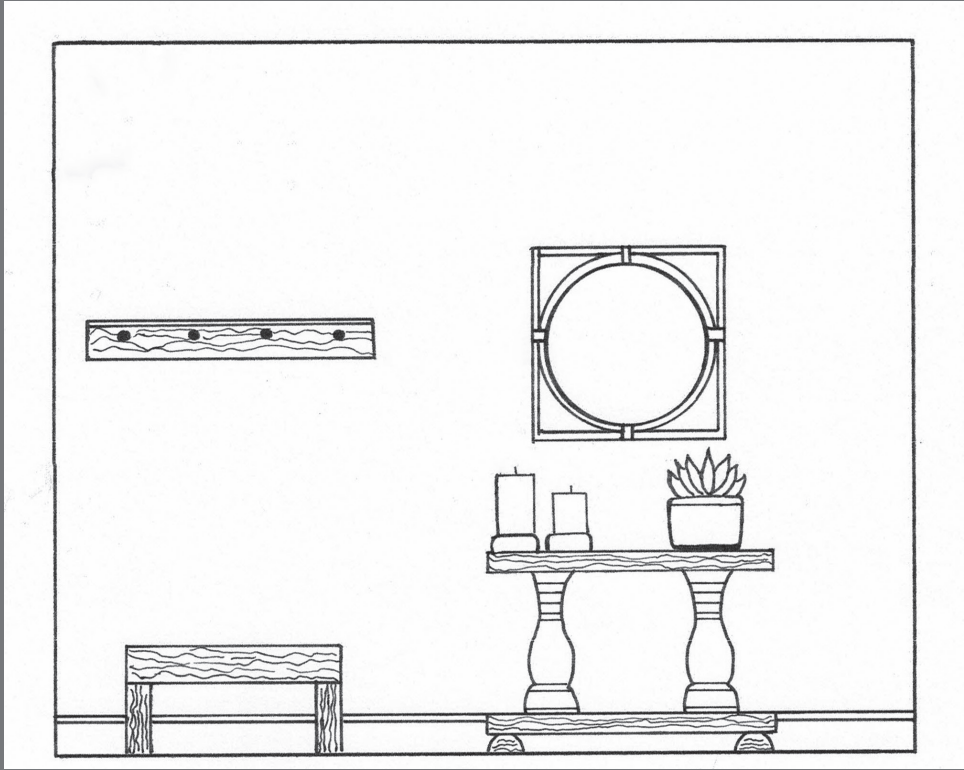
Rustic Modern Loft

A busy entrepreneur was our mock client for this project in residential design. After interviewing the client, we were to design a home away from home for when the client traveled to Chicago on business. The client had some unique wants and needs for his space. He wanted the modern triangled shape apartment to have the same feel and color scheme as his 1800's farmhouse in Ohio. He requested an open floor plan with a large gourmet kitchen, a master bedroom and bath, a guest bathroom, an office, and a place to store extra tables and chairs for when he entertained. He also needed a place for his baby grand piano in the space. The client liked rustic natural looks and finishes. His color specifications were black, white, and golden yellow. He also had a list of things he did not want in the space, such as a formal dining area, plants, a television, or a dresser. Lots of natural wood and repurposed items were used to give the loft a rustic feel, similar to his Ohio home. In areas where natural materials were not able to be used, faux materials were used to simulate the look of natural materials. The walls of most of the loft were painted a warm golden yellow as a neutral backdrop for the wood and stone finishes. Incorporating the clients color palette was accomplished in the main living area through the furniture fabrics and tied together with an area rug comprised of his color palette. In the master bedroom warm neutrals were used to give the space a calm and peaceful feel. The colors were pulled from the focal point of the room, a set of book end cut limestones that were hung on the wall above the bed. The wall with the stones is painted a warm brown to contrast against the stones and show off their natural beauty. The remainder of the bedroom walls were painted a soft beige similar to the body of the stones. Since the client requested that he not have a dresser a cubby system was placed in the closet to hold his clothes. It is hidden behind a set of stained-glass closet doors with a rustic woodland scene on it. The office space offers majestic views of the city skyline while providing ample workspace for the client.

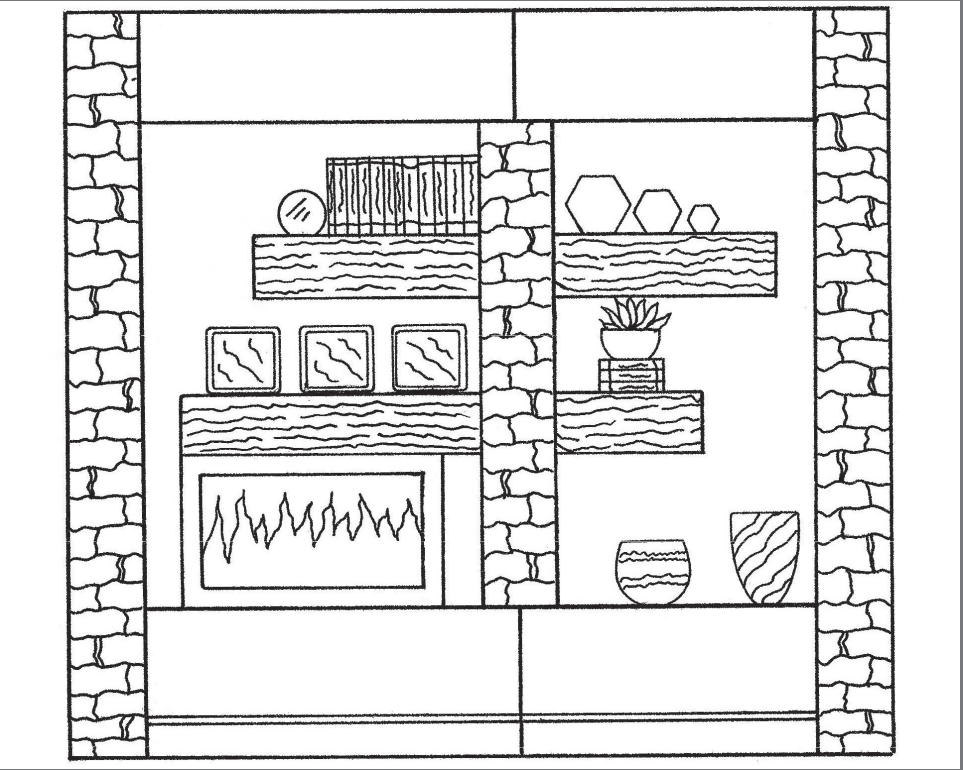


Floor Plan
Scale 1/8" = 1' - 0"

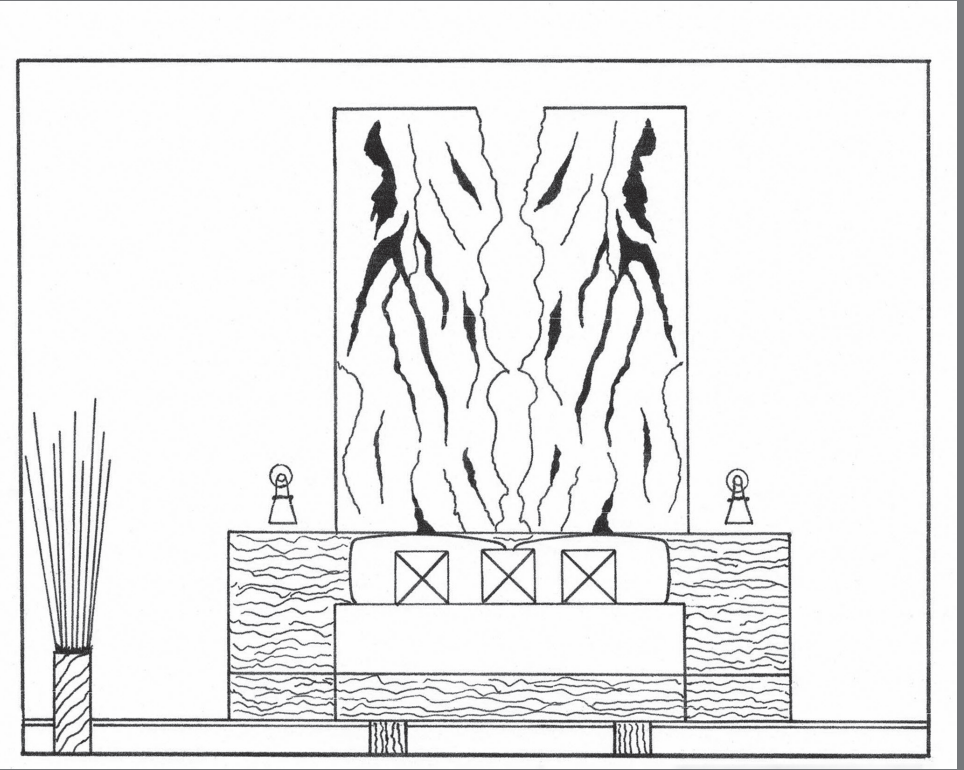
Elevations



Entry
Scale 1/2" = 1' 0"



Fireplace
Scale 1/2" = 1' 0"



Master Bedroom
Scale 1/2" = 1' 0"



SW Lantern Light



Reclaimed Barnwood



SW White Duck

SW Aspinwall



Slate Tile Entry Floor



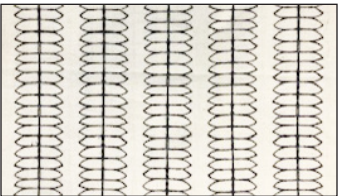
Living Room Area Rug



Accent Chair



Throw Pillow



Throw Pillow



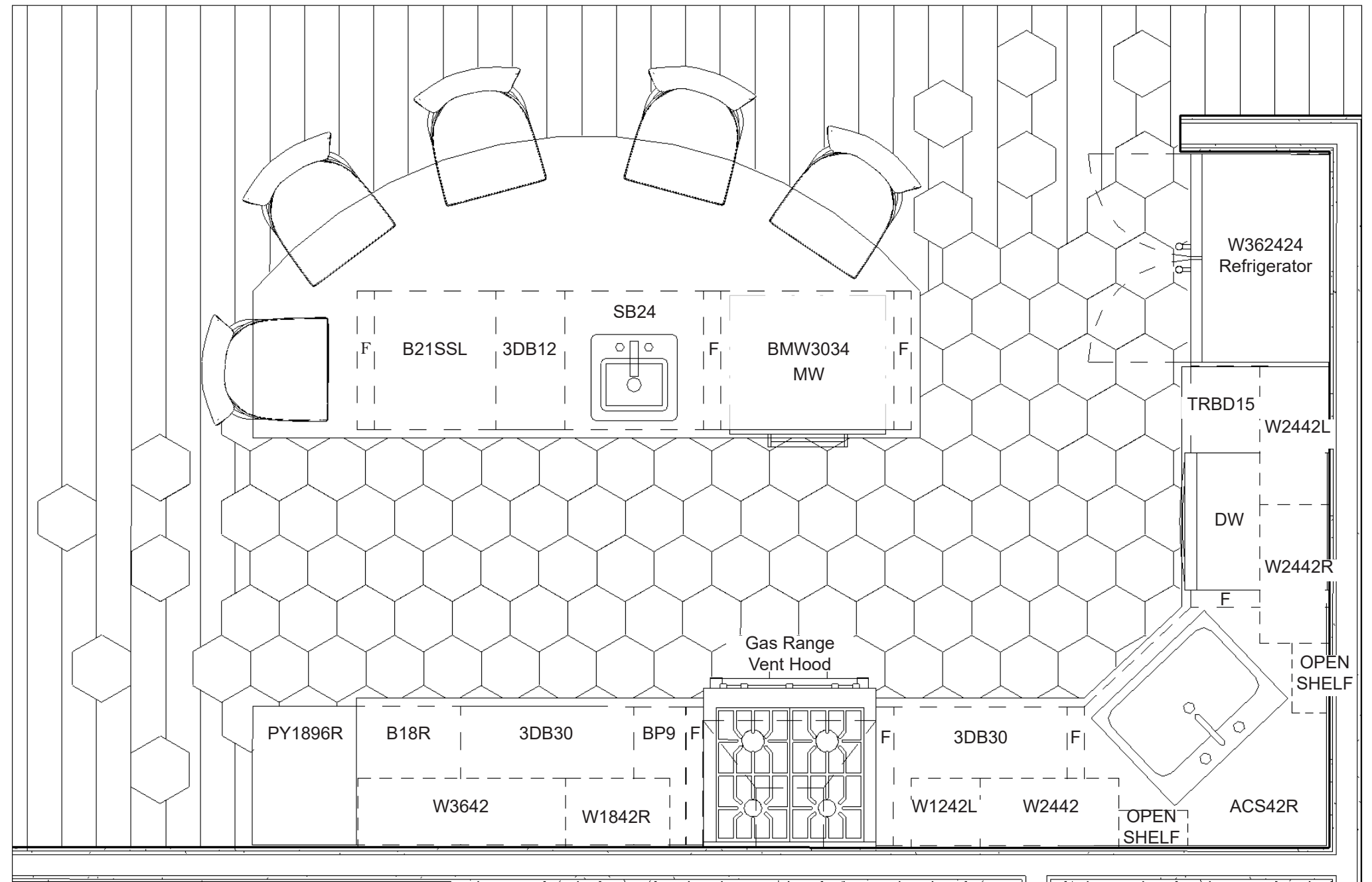
Bed Linen



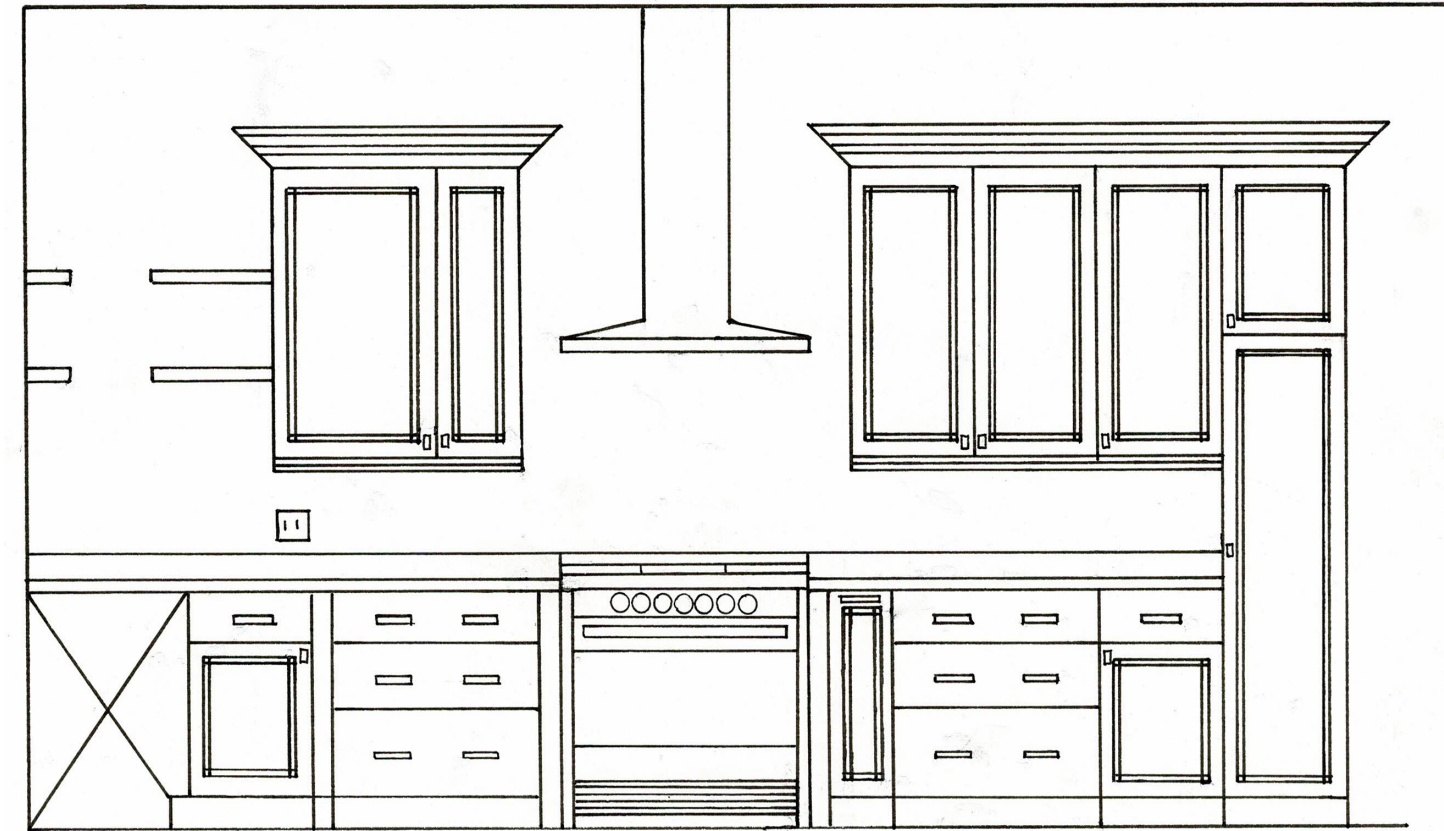
Bed Linen

Loft Kitchen

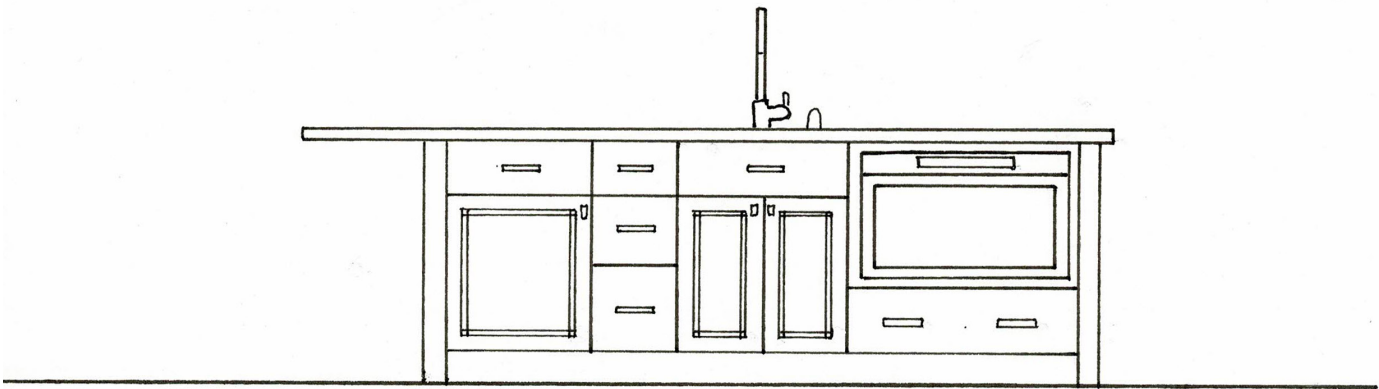
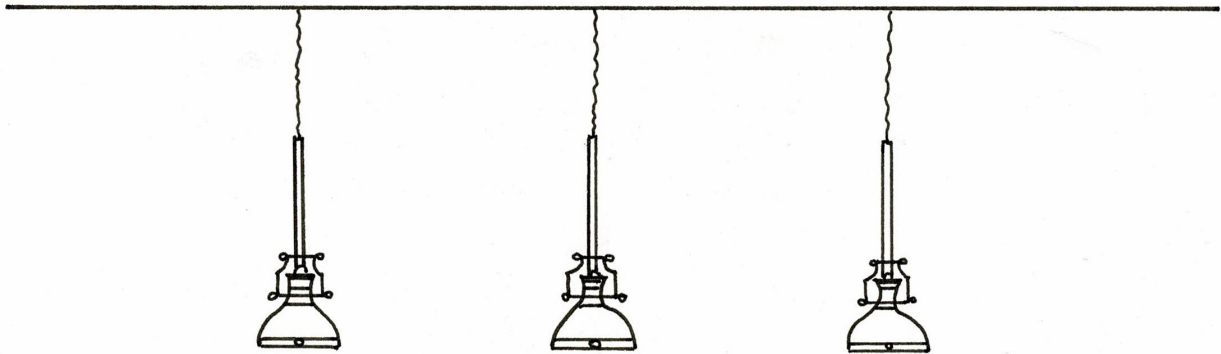
Just beyond the living room is the beautiful and functional kitchen space that welcomes you to cook a meal for one or guests. The cabinets are a black painted finish that have been distressed to give the cabinets a look of being old and repurposed but have many additional features. Ergonomic slide outs, deep pan drawers, a built-in spice cabinet, a narrow pull out near the stove, above the refrigerator storage for baking pans, a built-in pantry, and a hide away cabinet for the client's Kitchen-aid are a few of the hidden gems in the cabinets, making the kitchen more efficient to work in. Satin nickel knobs and pulls contrast and shine against the black cabinetry. Atop the base cabinets is a Venetian gold granite countertop and backsplash that ties in the black, gold, and white color scheme of the open living space. Granite was requested by the client. Stainless steel appliances are located throughout the kitchen. A pull-out microwave drawer is located in the island, again for ergonomics and to keep counter clutter to a minimum. A pair of dishwasher drawers are provided so the client can use one for just himself or both for when he has guests. A deep corner sink will also aid in clean up with its professional grade faucet. When doing dishes, the client can admire the lovely faux window provided in the form of an antique stained-glass window. The flooring is a mix of black hexagon tiles that randomly transition into the wood floors of the rest of the loft. The tiles are meant to provide water resistance and ease of cleaning in the kitchen area. The island matches the cabinets and granite of the rest of the kitchen for continuity. There is a stainless-steel bar sink and faucet that matches the style of the main sink, again for continuity. A bar sink was also requested by the client. Above the island is three nickel finish pendant lights in a rustic style. The island offers ample seating for five with barstools that swivel so conversation from the island can be included in the living room space.



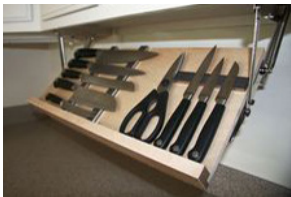
Floor Plan
Scale 1/2" = 1' - 0"



West Kitchen Elevation
Scale 1/2" = 1' - 0"



East Kitchen Elevation
Scale 1/2" = 1' - 0"



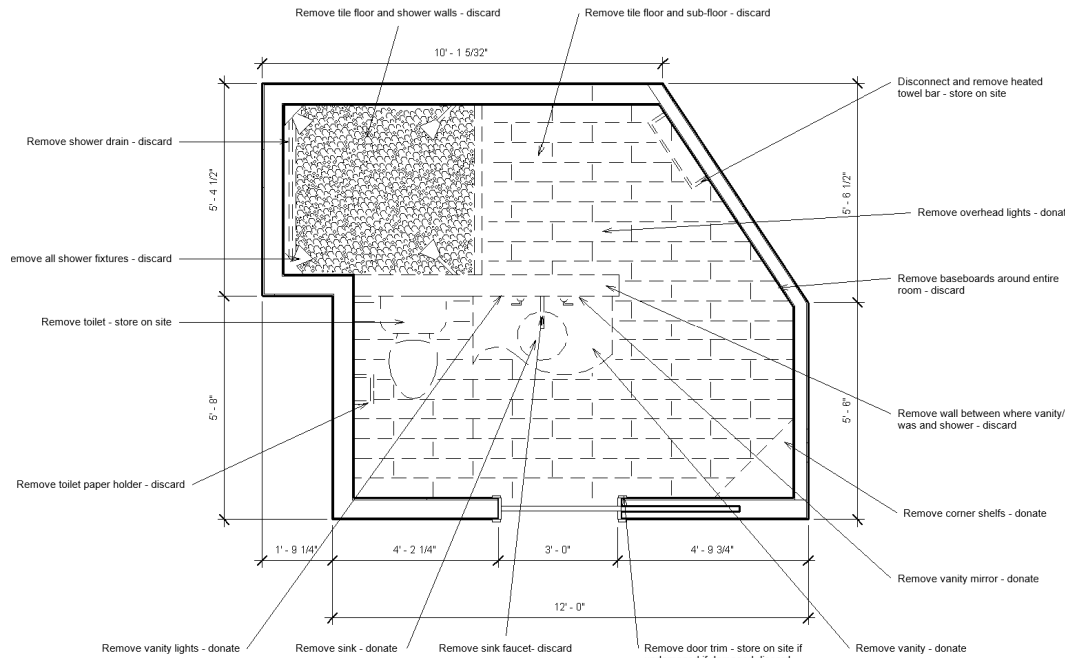
Venetian Gold Granite



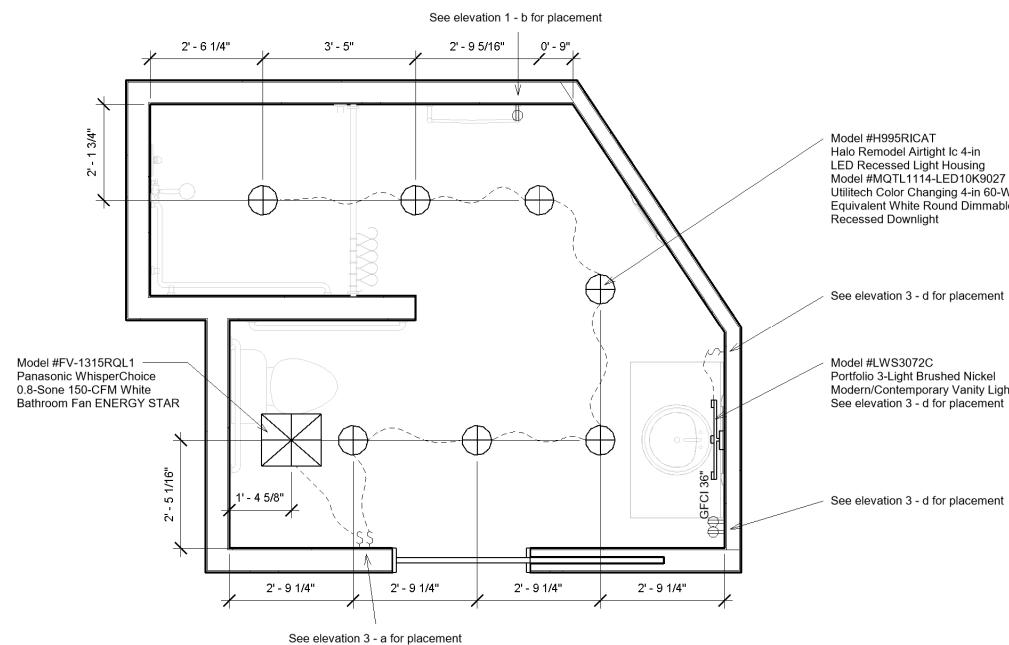
Loft ADA Bathroom Conversion

Construction Set Drawings

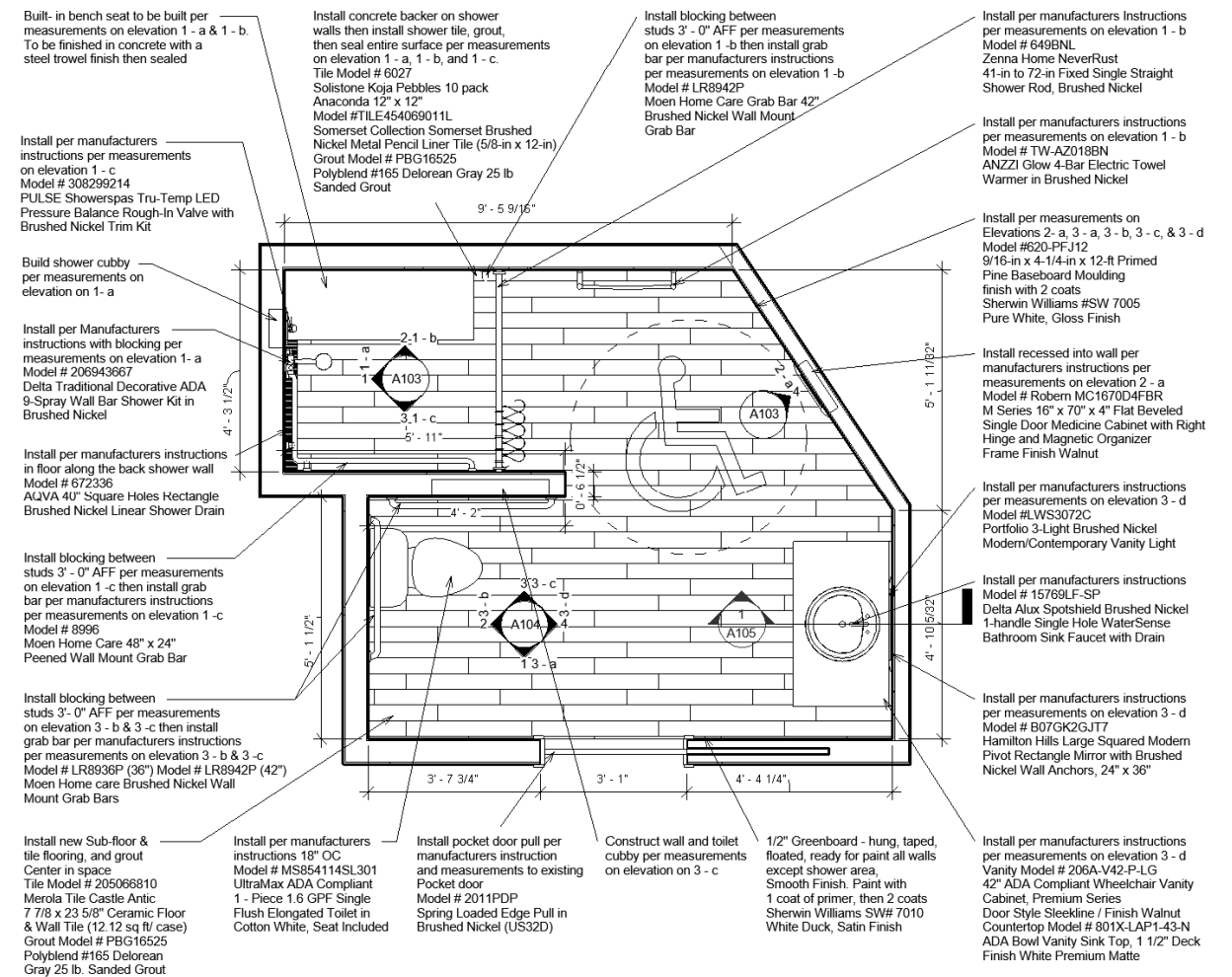
The loft bathroom project has been used in three separate projects in the interior design program. First there was the original bathroom design for the loft project itself. Then we were to redesign it for the same client after he had a catastrophic accident (imaginary) and was paralyzed from the waist down. For that project we redesigned the bathroom space using ADA guidelines and FFE's, then drew an axonometric perspective of the space. For this final version of the loft project bathroom, we were to take the ADA version of the bathroom and create a set of construction drawings that could be used to build the bathroom. Here are some highlights of the FFE's used. The faux wood tile was again used as it is slip resistant and to keep the rustic feel of the space. The honed pebble tile was chosen to add a natural element to the bathroom. In the shower, the mixing valve has an anti-scald feature to prevent the client from getting burned by too hot of water. The shower head has push button controls that can be controlled with one hand for ease of use. A built-in bench was added to the shower for the client to have a space to transfer to for showering, and a built-in cubby for products is within easy reach. A heated towel bar is provided to keep towels warm and toasty. A full-length wall mirror hides extra storage for personal items within easy reach of the client. At the sink area, a wall mounted vanity is provided to give clearance for the client's wheelchair. It is topped with a countertop with a shallow sink and a single handle faucet for ease of use. A tilt mirror is placed above the vanity and can be positioned for the client or guests. Pocket doors can sometimes be difficult for those in a wheelchair to manage, but this version of the pocket door pull was design specifically for those with mobility issues. This project shows that ADA design can also be beautiful.



Demolition Plan
Scale 1/2' = 1' - 0"

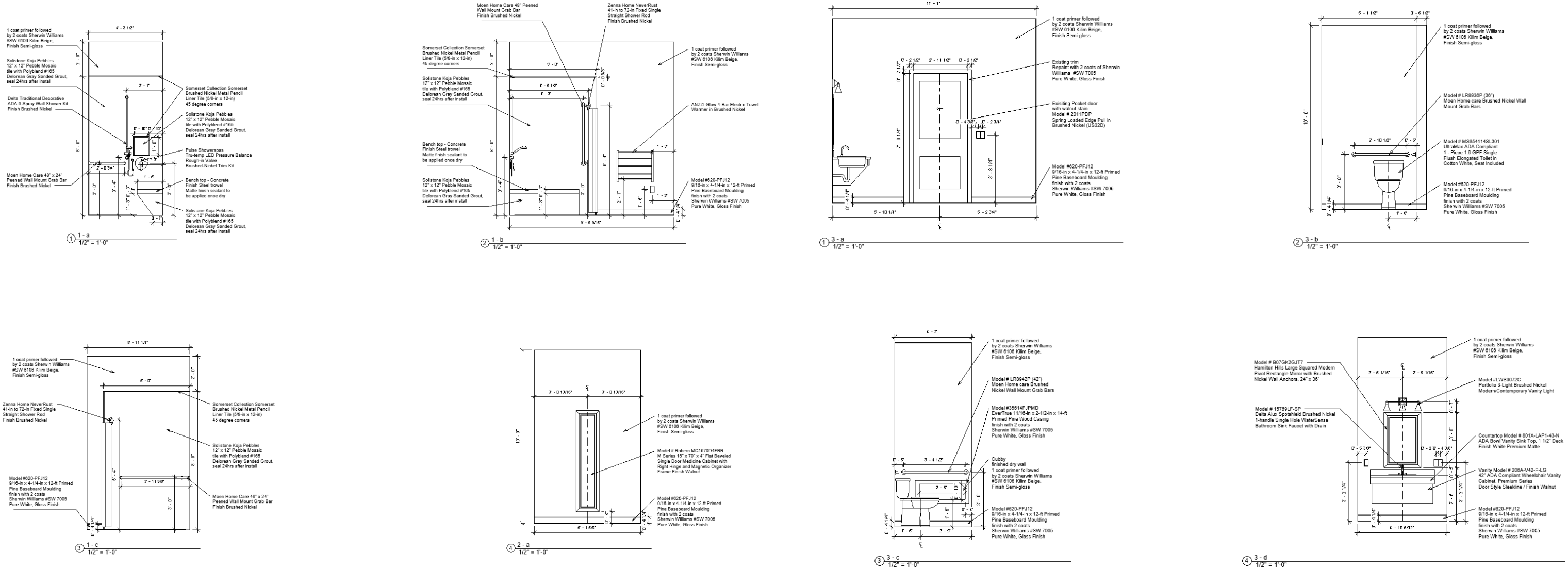


Electrical Plan
Scale 1/2" = 1' - 0"



New Work Plan
Scale 1/2" = 1' - 0"

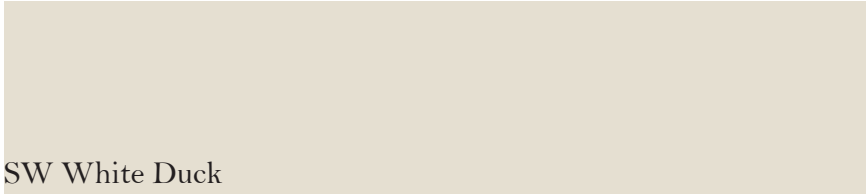
Elevations



Porcelain Floor Tile



Honed Pebble Shower Tile

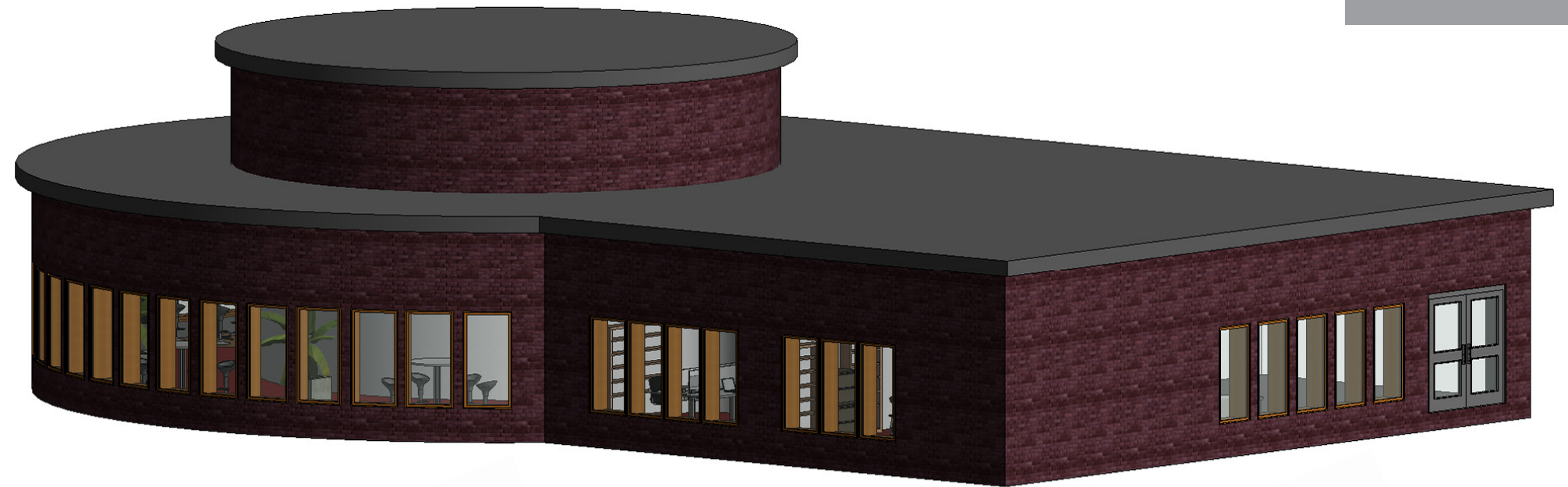


SW White Duck

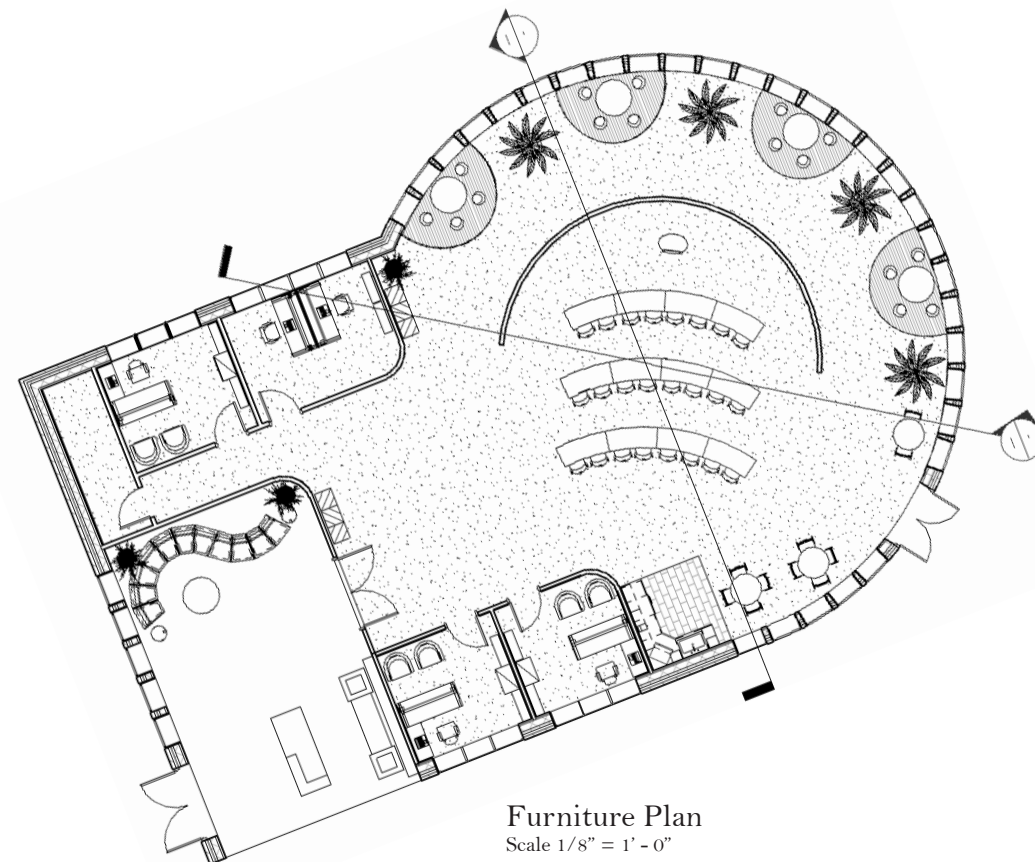
Google Training Center



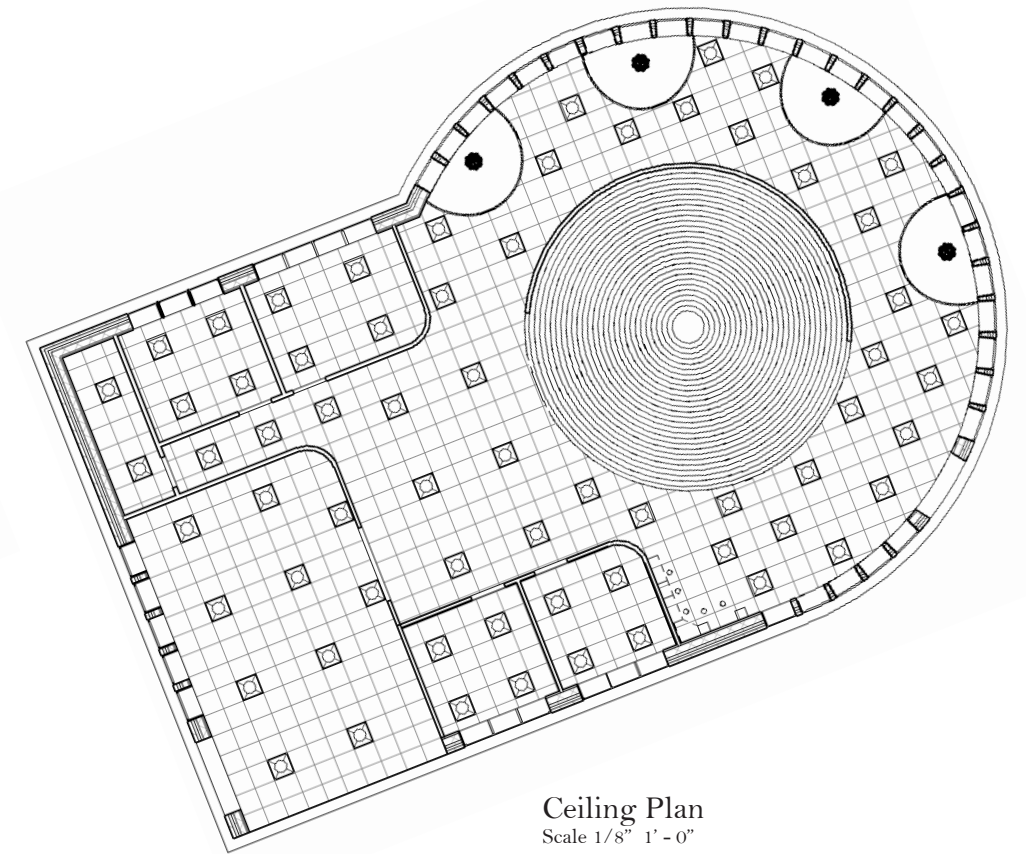
This was a conceptual design project for non-residential design. We were to design a training center for a major corporation being inspired by a well-known designer's style. We were instructed to take a "big idea" and run with it. Phillippe Starck was my designer. I felt his fun and unique style paired nicely with Google's corporate image and culture. The "big idea" for my project was to use circles, curves, and bright colors like those in Google's name. The shape of the building, the break-out and training areas, carpet, lights, and ceiling, along with many of the FFE's were all inspired by the idea of using circles in the design. The furniture used in much of the training center is from Phillippe Starck's collection. The vibrant colors of his pieces are set against white walls and a black and white swirled carpet to become the artwork in the spaces. Large banana trees are used in the break-out areas to add a touch of nature to the space, while also providing an illusion of privacy between the separate areas. The circular flooring in each of the break-out areas also help to create the illusion of a separate space. The large windows throughout the training center invite nature inside, along with an abundance of natural light. A kitchen with bright blue acrylic cabinets is a fun place to make a snack or grab a cup of coffee. Nearby is a dining area to have a quick bite or to just sit and relax. Three private offices are available for trainers and IT personnel. A flex space is also provided for employees. Form, function, and fun are all included in this colorful design inspired by Google and Phillippe Starck.



3D Exterior Perspective



Furniture Plan
Scale 1/8" = 1' - 0"



Ceiling Plan
Scale 1/8" = 1' - 0"

Revit Renderings



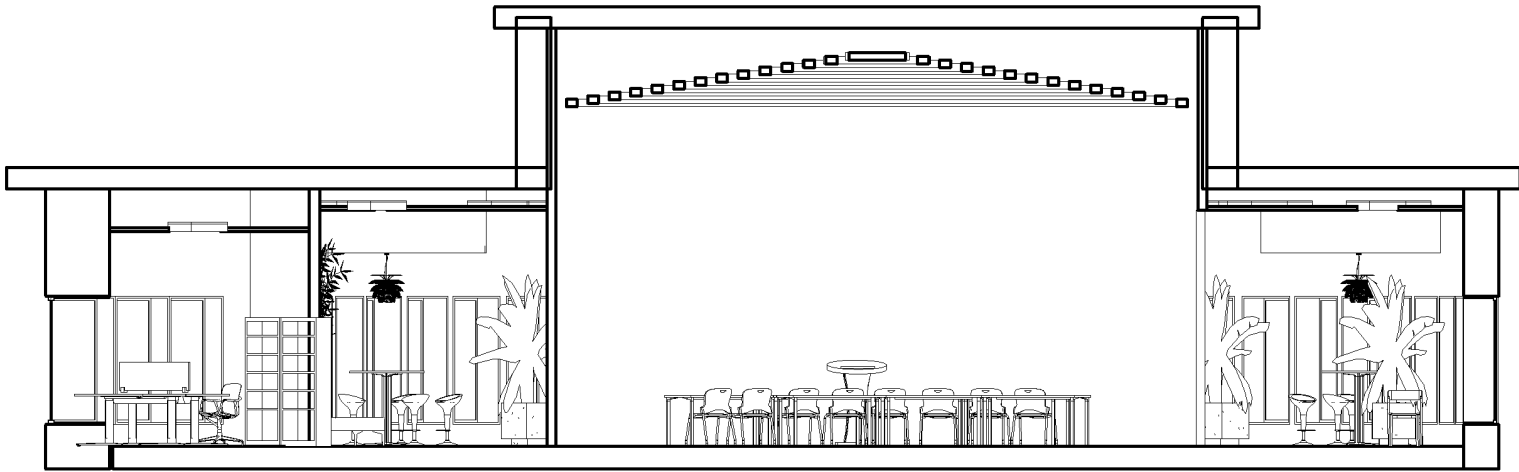
Private Office



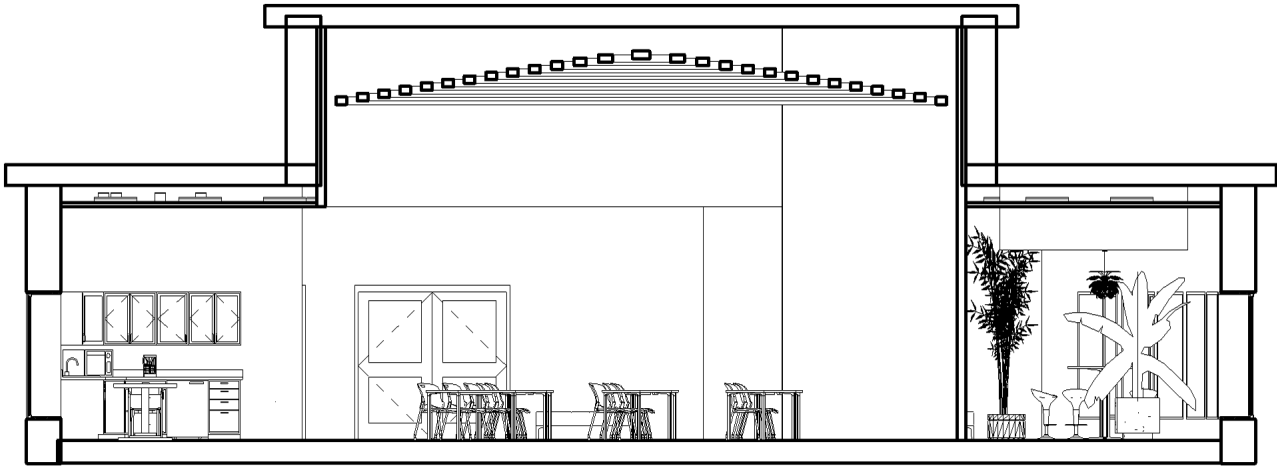
Training Area



Break-Out Area



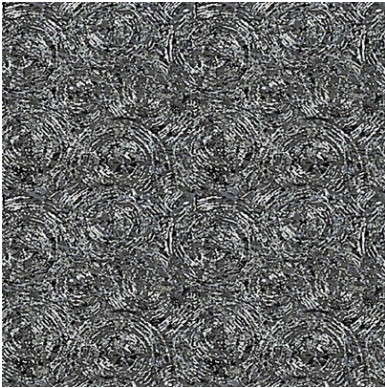
Section 1
Scale 1/8" = 1' - 0"



Section 2
Scale 1/8" = 1' - 0"



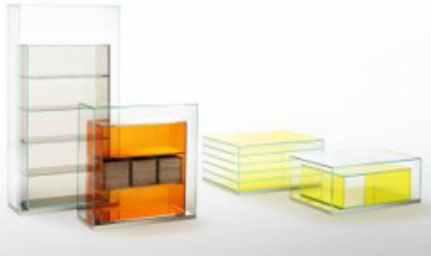
Traing Area Ceiling Lighting



Carpet



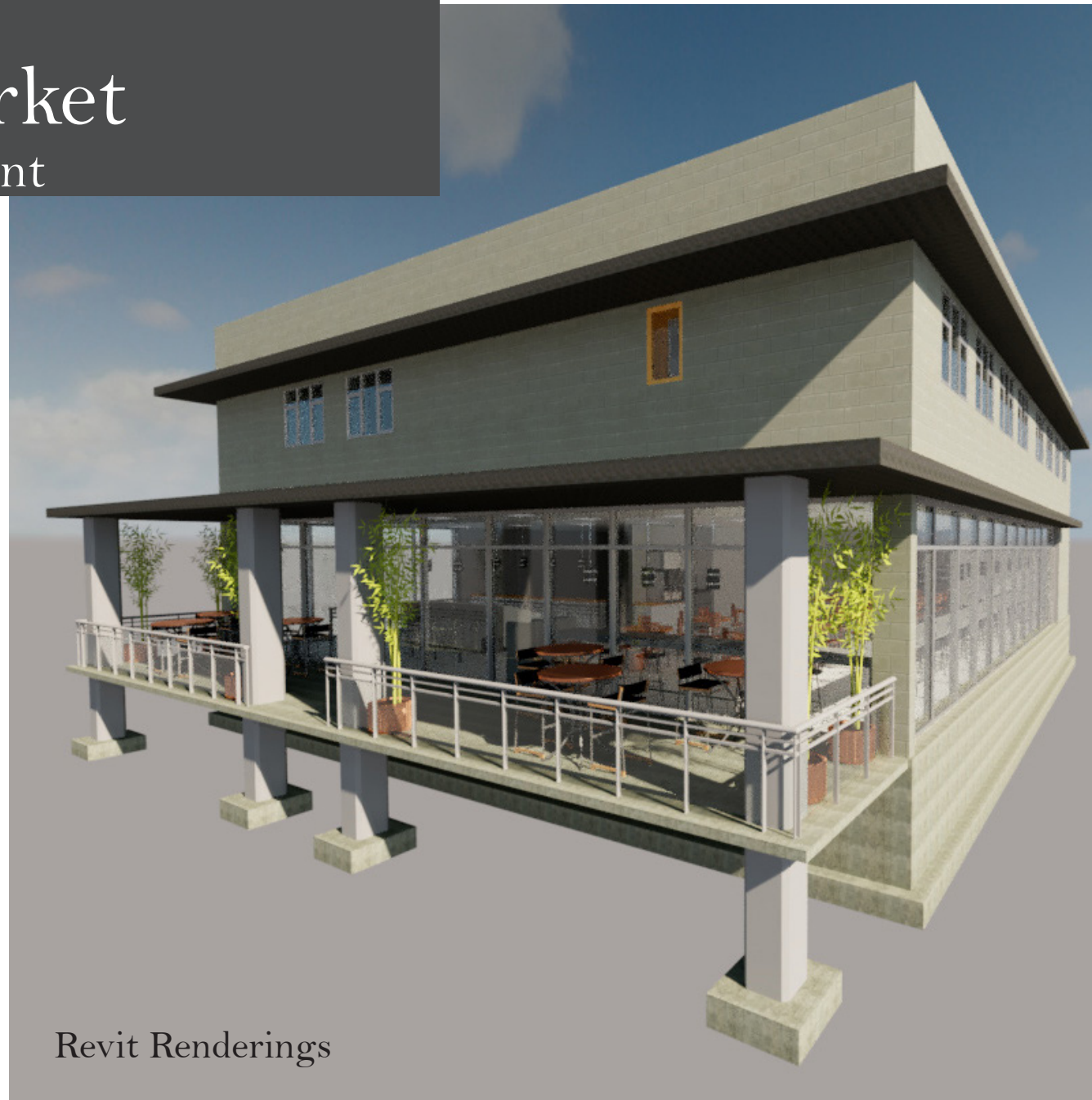
Curved Break-Out Area Wall



Gem City Market

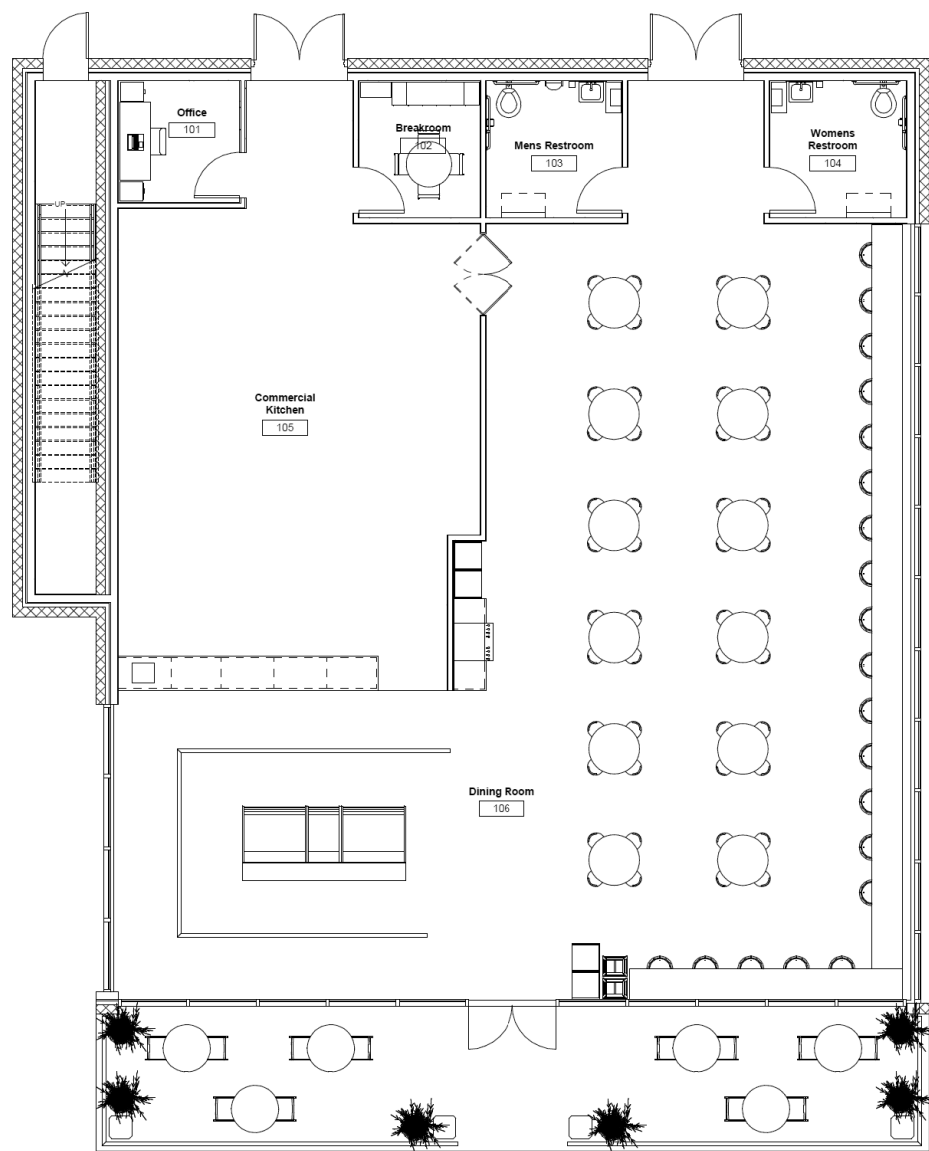
Future Developement

For this final project in my Revit class, we were to design a multi-use commercial space adjacent to the Gem City Market on Salem Avenue. The lower level of the building was to be a commercial retail space with the type being of our choice. The upper level was to be residential. We were given a choice to decide how many apartments to put in, but it had to be accessible from outside of the retail space. Both floors had to be fully furnished. A site plan, floor, furniture, and lighting plans, building and wall sections, interior and exterior elevations, and perspectives, along with Revit cloud renderings were required for this project. For my retail space I chose to do a restaurant since there are not many in that neighborhood. I decided it would be a Mexican restaurant with an outdoor patio area. I added a salsa bar in the center of the que area, and bar top seating around the perimeter of the dining area by the windows. Pendant lighting is hung above the bar top seating and order counters. Plenty of table seating was also included. An order counter, drink station, break room, office, and two restrooms were also included in the design of the restaurant space. The commercial kitchen area was intentionally left blank since it is such a specialized design field. For the residential space I created two apartments. Each apartment has two bedrooms with walk-in closets, two full baths, a laundry space, coat closet, mechanical room, kitchen, and a living room. Outside each apartment is also a storage unit for personal items. The apartments are accessible by an enclosed stairway to protect residents from the weather and for their privacy. Each apartment is fully furnished in a clean contemporary style, and ready for tenants to move in. This multi-use space would be a welcomed neighbor to the Gem City Market.



Revit Renderings

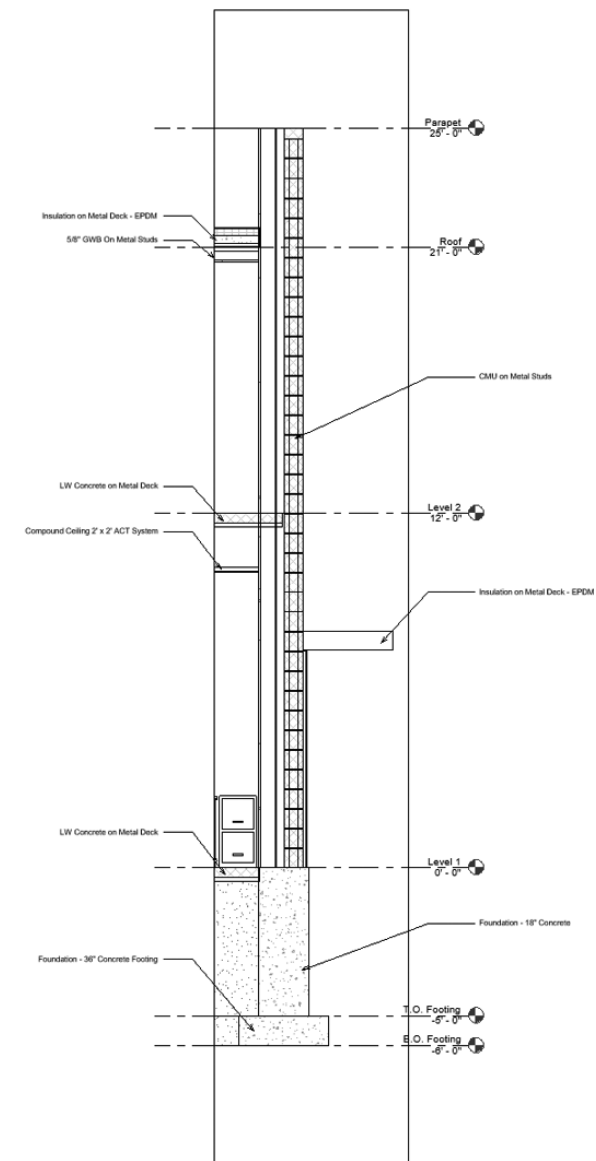




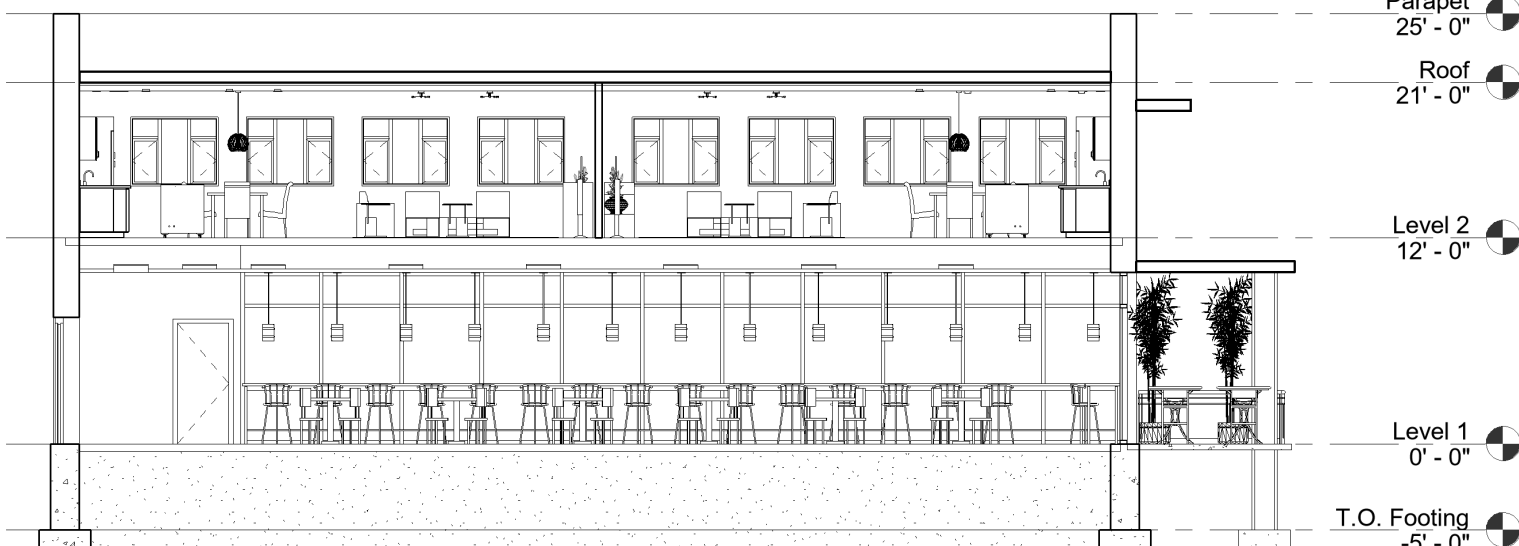
First Floor Furniture Plan
Scale 1/8" = 1' - 0"



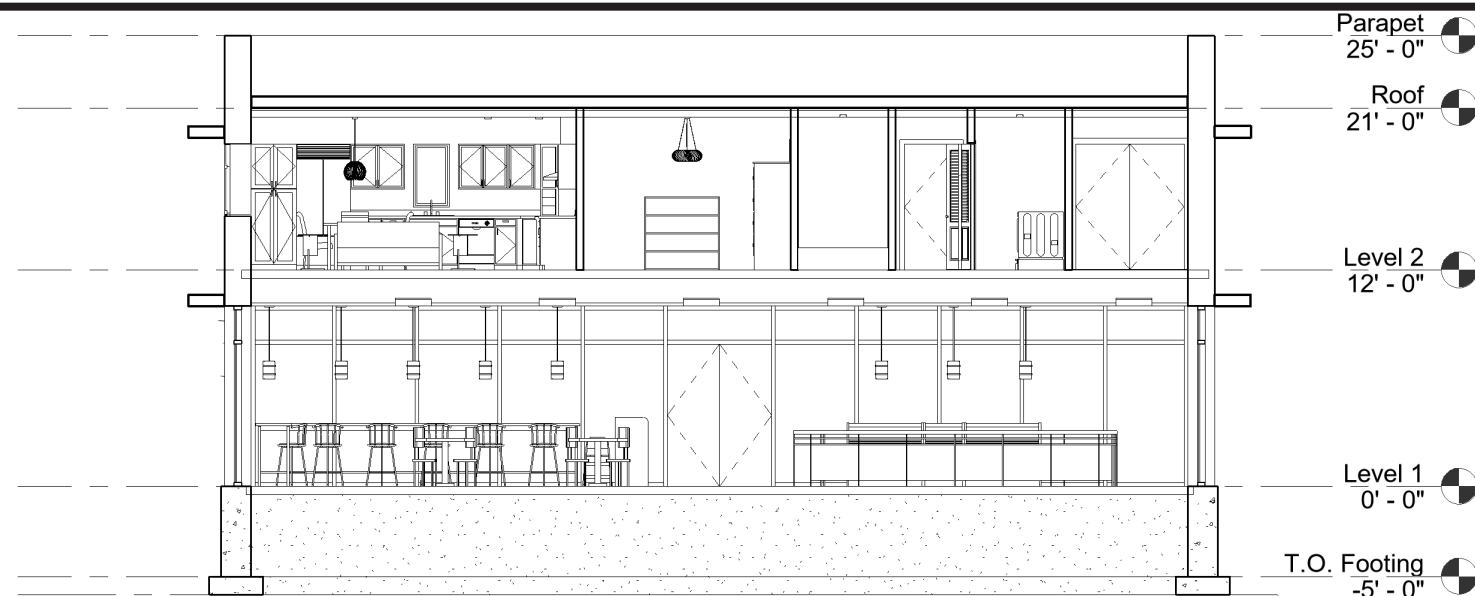
Second Floor Furniture Plan
Scale 1/8" = 1' - 0"



Wall Section
Scale 1/2" = 1' - 0"



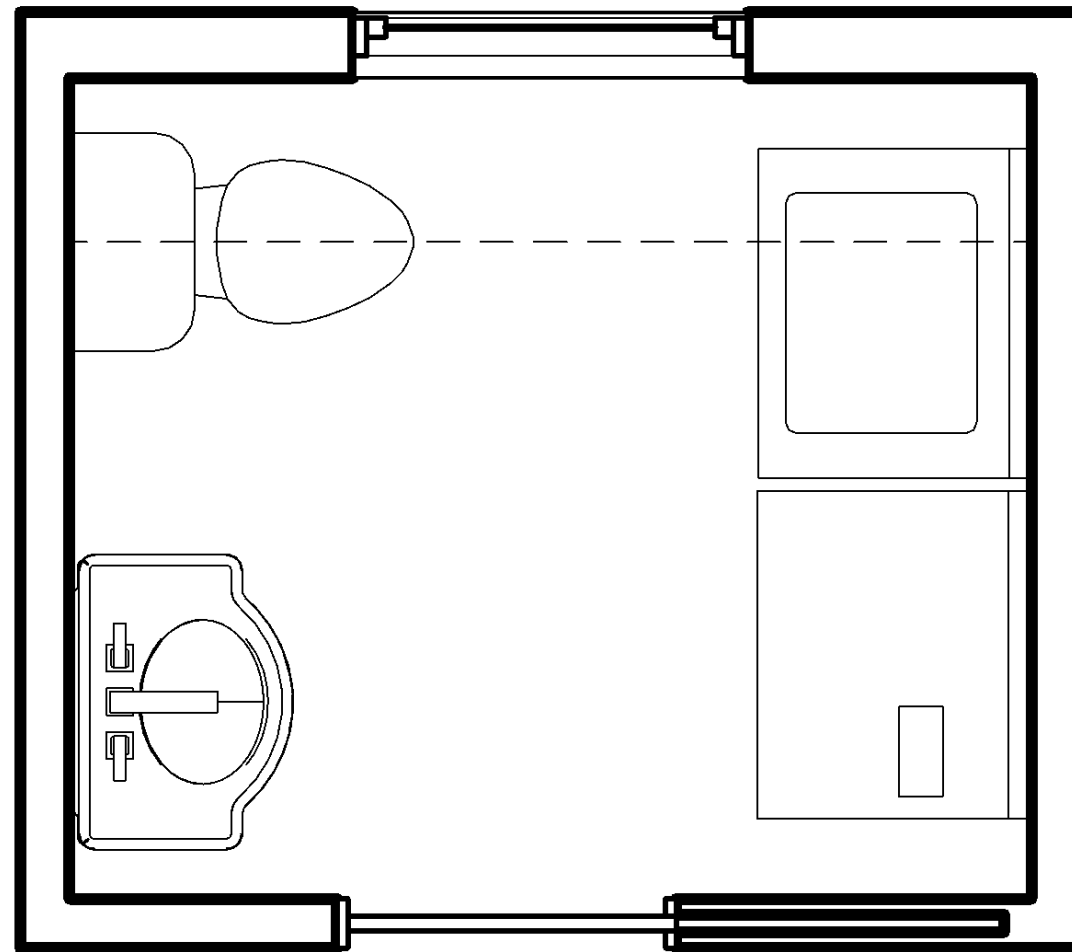
North - South Section
Scale 1/8" = 1' - 0"



East - West Section
Scale 1/8" = 1' - 0"

Petite Luxurious Bath

This half-bath/laundry room combination was crying out for some attention. Worn out surfaces, a lack of privacy and function were the motivators for this remodel. The homeowner wanted to convert this space into her own personal retreat with lots of antiques and femininity. The laundry area was moved to another location in the house to make room for the new bathroom. Using repurposed items was also a goal for this project to be more sustainable, to save on the budget, and to give the feeling that the bathroom was original to the old home. For the new floor plan the window was removed and a smaller arched window was added with a decorative film. This gave privacy to the new space and accentuated the existing arch. The arch was doubled in width to serve as a canopy for an antique cast iron skirt tub the homeowner found. An antique table was converted into a vanity with a porcelain vessel sink. The water closet was moved to the corner opposite of where it was originally to make room for the tub. Bronze fixtures were added to continue the feel of the space being old and antique. A lucky find was the antique chandelier that the homeowner refinished to fit the space. The vanity light was another find. Faux wainscotting was added around the lower portion of the walls. It was topped with a mosaic tile and capped with an iridescent pencil tile to give a little shine and glamour. A tone on tone wallpaper was chosen to add a subtle pattern and more femininity to the space. The plum paint used throughout the space adds contrast to the otherwise gray space. The tile flooring chosen for the space was a budget splurge. The hexagon patterned tile gives a look of an antique quilt and became the perfect backdrop for the antiques in the space. The accessories in the bathroom were primarily found objects or DIY projects of the homeowner. The small bathroom evokes a calm and relaxing feeling with a touch of luxury everywhere you look.



Before...



After...

